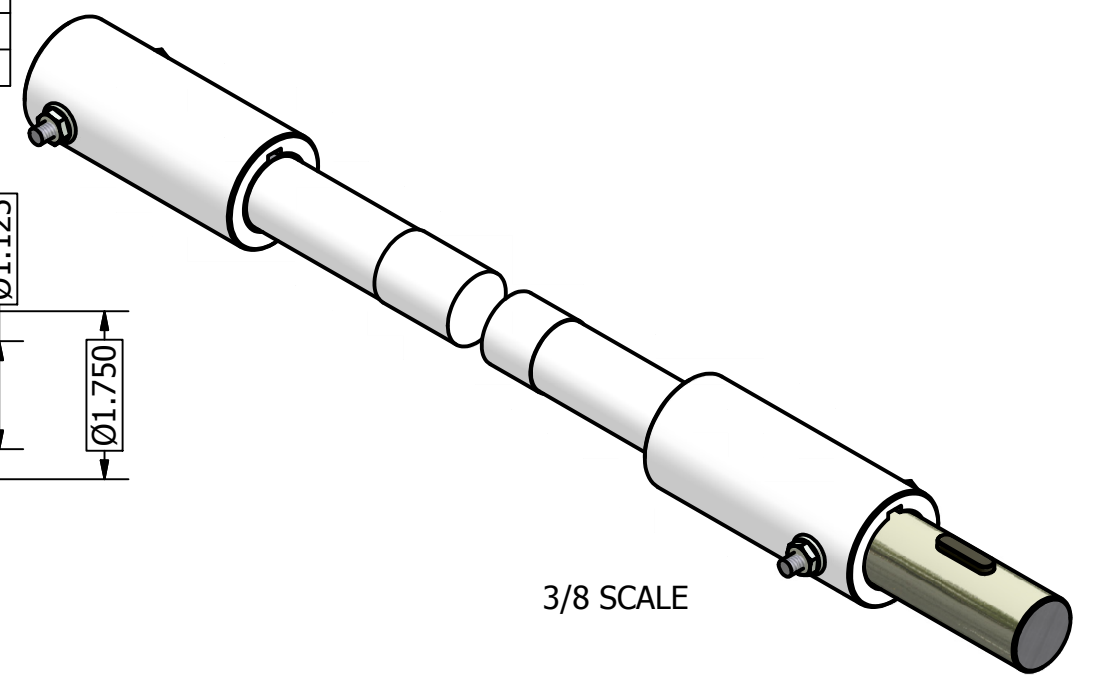
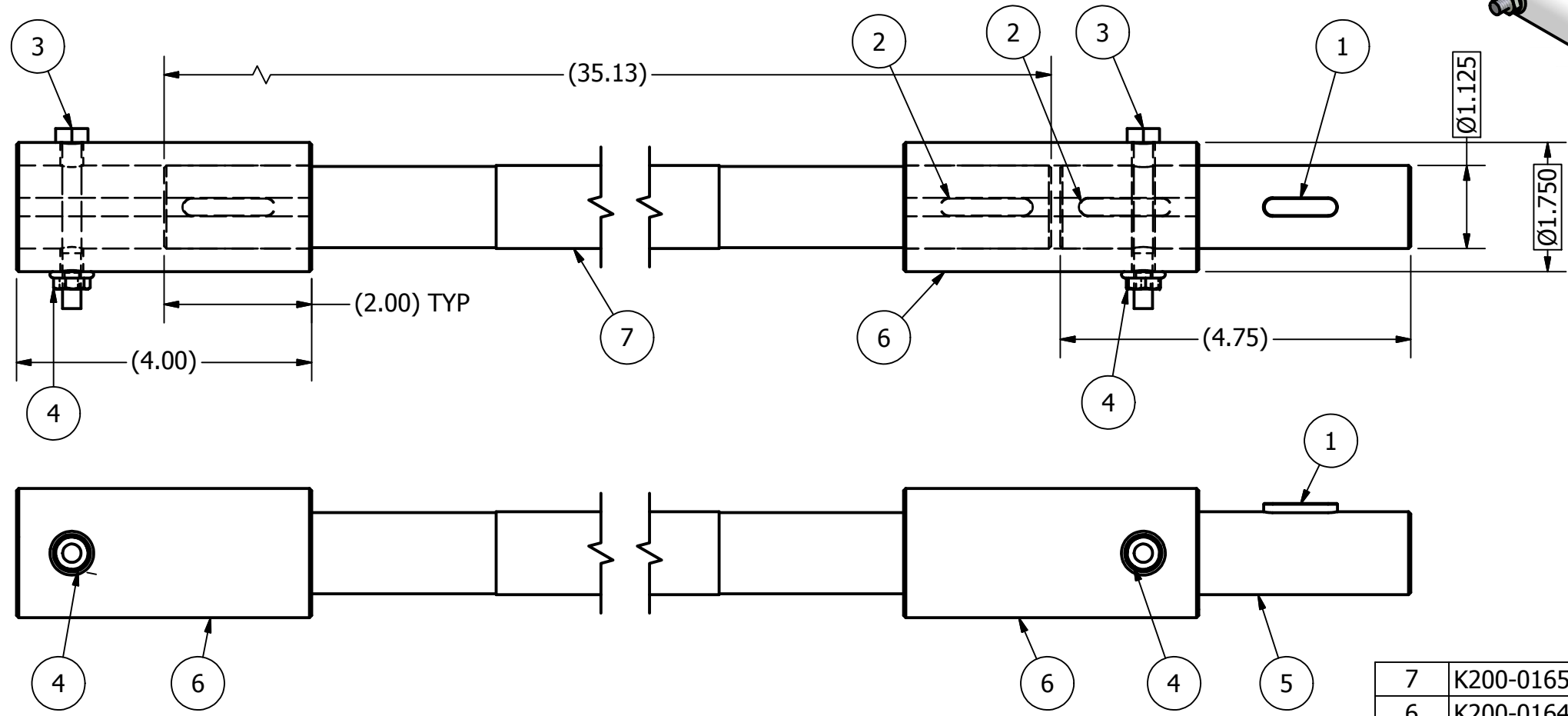
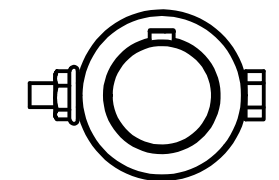


REVISION HISTORY

REV	ECN	DESCRIPTION	DATE	APPROVED
A	K950198	RELEASED	12/20/1995	DJ
B	K080158	REDRAWN IN INVENTOR, WAS B-SIZE	9/17/2008	pggalea



3/8 SCALE



ITEM	PART NUMBER	QTY	DESCRIPTION
7	K200-01654	1	ROD, CONNECTING, ROLL RLSE 10 X 36"
6	K200-01648	2	COUPLING, ECCENTRIC ROD 10"
5	K200-01647	1	ROD, ROLL RELEASE ECC, SHORT 10""
4	66783300	2	NUT, HEX SERR LOCK 1/4-20
3	62583335	2	HHCS, 1/4-20 X 2.25"
2	49400620	3	KEY, SQUARE, RND END .250 X 1.25"
1	49400616	1	KEY, SQUARE, RND END .250 X 1.00"

Parts List

- NOTES:
- DO NOT SCALE FROM DRAWING.
 - ONE PIECE REQUIRED PER ROLLER MILL ASSY, SINGLE HI 10 X 36".
 - TWO PIECES REQUIRED PER ROLLER MILL ASSY, 2 HI 10 X 36".
 - RH MILL ASSEMBLY SHOWN, ASSEMBLE CAP SCREWS & LOCK NUTS OPPOSITE FOR LH MILL.

This drawing is the property of the A.T. Ferrell Company, Inc and must be returned immediately upon request. No part of this drawing may be reproduced, stored in a retrieval system or transmitted in any form or by any means, without prior written consent of the A.T. Ferrell Company, Inc

<p>CAD NO MANUAL CHANGES</p> <p>TOLERANCES EXCEPT AS NOTED</p> <p>DECIMAL: xxx ± .005 xx ± .030</p> <p>FRACTIONAL: ± 1/32</p> <p>ANGULAR: ± 1/2'</p>			DIVISION OF A. T. FERRELL COMPANY		BLUFFTON, INDIANA - USA
			FINISH:	SCALE:	DRAWN BY:
	NONE	1:2	pggalea		
TITLE:		CONNECTING ROD ASSY, 10 X 36" SGL/2HI			
DATE:	SIZE:	PART NUMBER:	SHEET:		
9/17/2008	B	K100-00169	1 of 1		