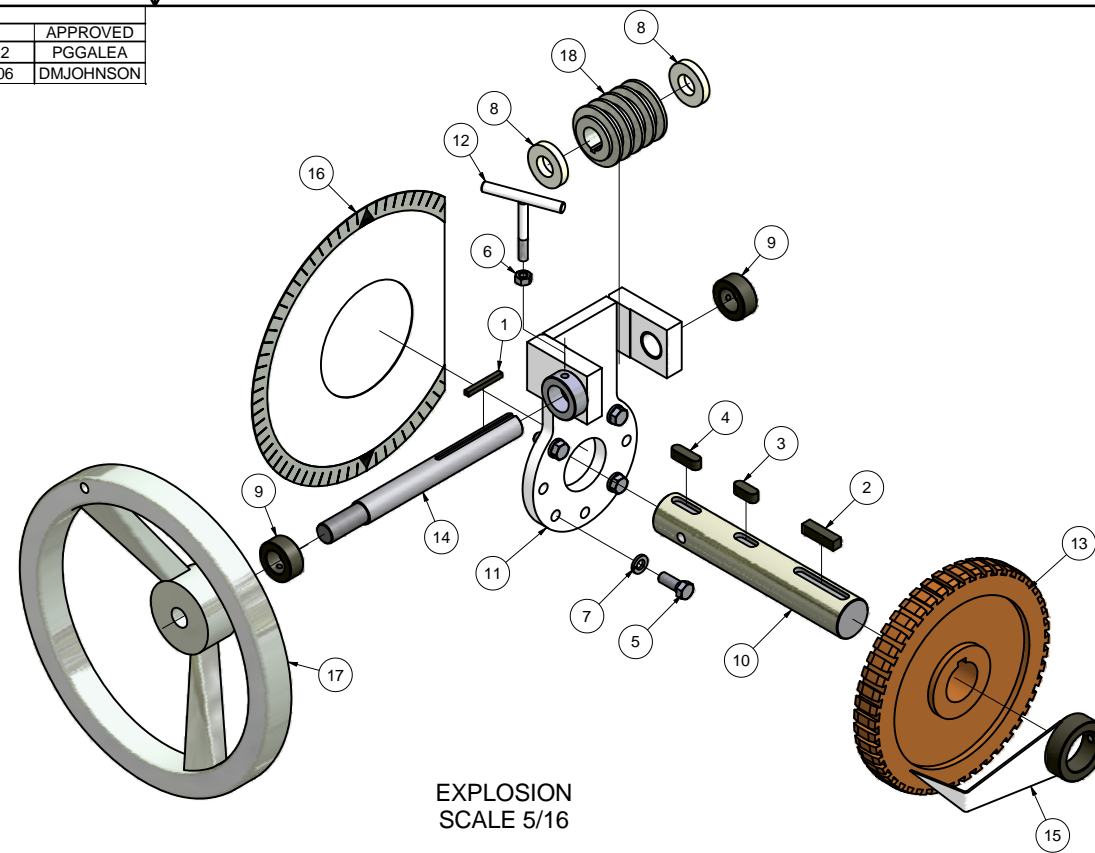
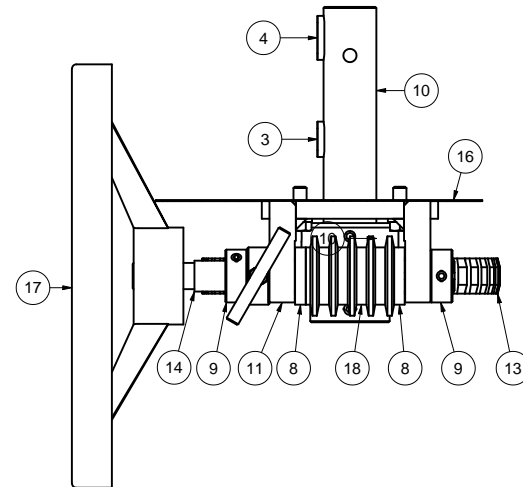
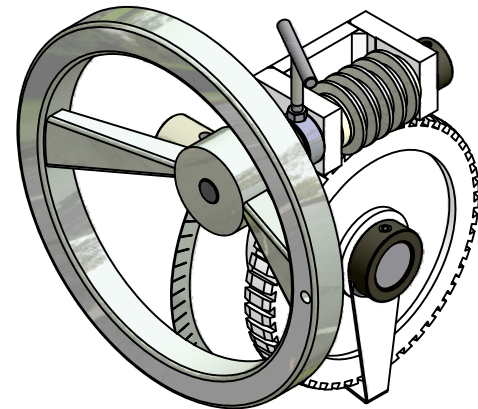
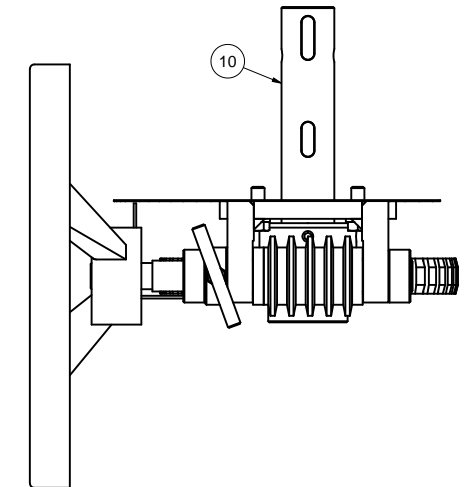


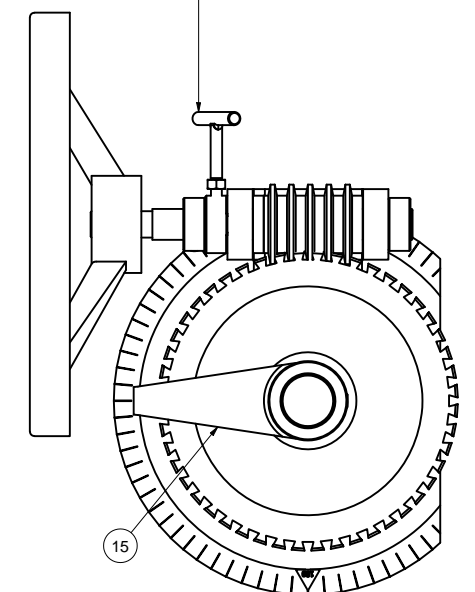
REV	LTR	REVISION HISTORY	DATE	APPROVED
A	K020060	DESCRIPTION REDRAWN CAD	8/8/2002	PGGALEA
B	K060159	DESCRIPTION REDRAWN INVENTOR, WAS B-SIZE	12/4/2006	DMJOHNSON



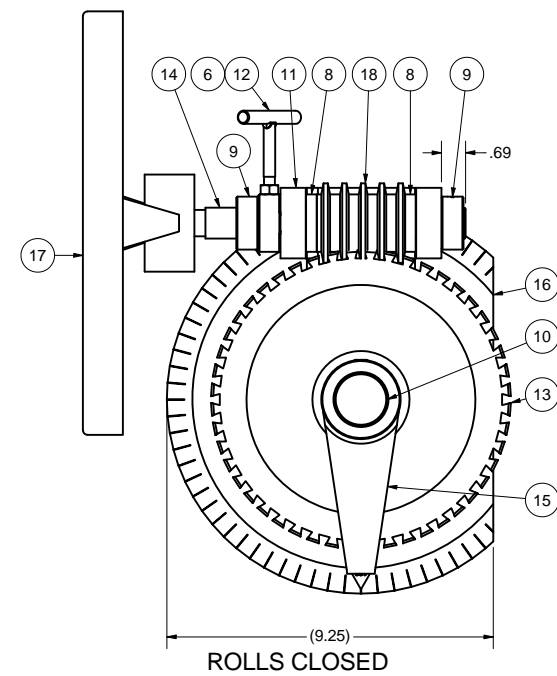
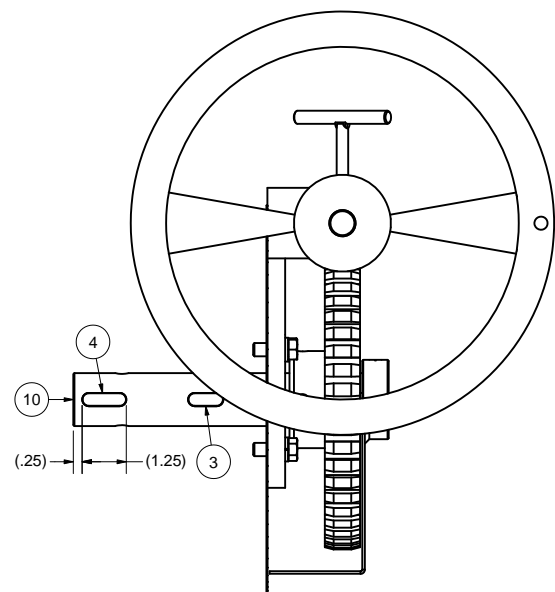
EXPLOSION  
SCALE 5/16



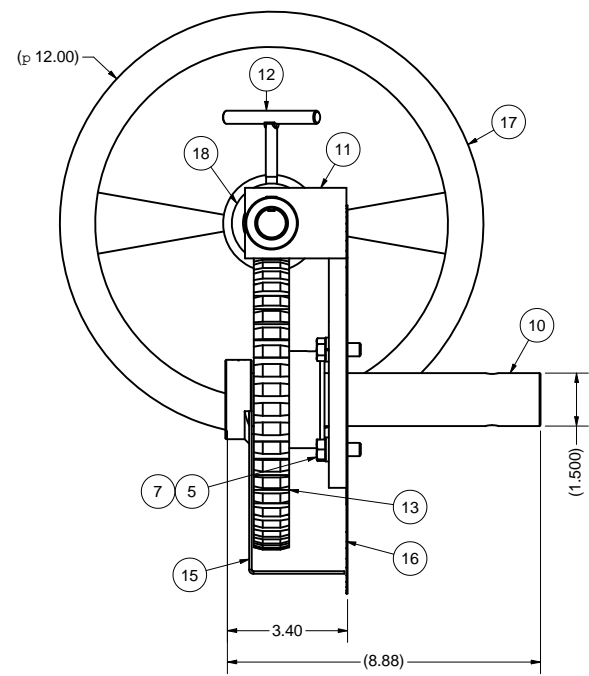
LOOSEN NUT & T-SCREW BEFORE  
TURNING HANDWHEEL. HANDWHEEL  
WILL INCREASE (OPEN) THE ROLL GAP ONLY.



ROLLS OPEN



ROLLS CLOSED



ITEM	PART NUMBER	QTY	DESCRIPTION
18	K922-00401	1	WORM, MICRO HANDWHEEL .875"
17	K905-00201	1	HANDWHEEL, 12"
16	K200-10033	1	PLATE, IND, MICRO HNDWHL RH 12/18"
15	K200-10030	1	POINTER WLDMT, MICRO ROLL RLSE, 12/18"
14	K200-00686	1	SHAFT, ROLL ADJ, MICRO HANDWHEEL 12/18"
13	K200-00669	1	GEAR, WORM 8.00", MICRO HANDWHEEL
12	K200-00665	1	T SCREW WLDMT, MICRO ROLL RELEASE
11	K200-00654	1	BRACKET WLDMT, WORM GEAR RH 8" 12/18"
10	K200-00108	1	ROD, ECC, MICRO ROLL RELEASE 220, 12/18"
9	80012005	2	COLLAR, SET .875 X 1.50 X .56"
8	70011516	2	WASHER, FLAT .78X1.63X.30" NYLATRON
7	66444400	4	WASHER, LOCK HELICAL 3/8"
6	66083800	1	NUT, HEX 5/16-18
5	62584422	4	HHCS, 3/8-16 X 1.00"
4	49400820	1	KEY, SQUARE, RND END .375 X 1.25"
3	49400816	1	KEY, SQUARE, RND END .375 X 1.00"
2	49000824	1	KEY, SQUARE .375 X 1.50"
1	49000426	1	KEY, SQUARE .188 X 1.63"

This drawing is the property of the A.T. Ferrell Company, Inc. and must be returned immediately upon request. No part of this drawing may be reproduced, stored in a retrieval system or transmitted in any form or by any means, without prior written consent of the A.T. Ferrell Company, Inc.

NO MANUAL CHANGES EXCEPT AS NOTED

FINISH: NONE  
SCALE: 0.38:1  
DRAWN BY: dmjohnson  
APPROVED BY: DMJ

**Ferrell-Ross**  
MATERIALS PROCESSING & RECOVERY  
SINCE 1869  
DIVISION OF A. T. FERRELL COMPANY  
BLUFFTON, INDIANA - USA

TITLE: MICRO ROLL RELEASE ASSY, 220 RH, 12/18"  
DATE: 12/4/2006  
SIZE: D  
PART NUMBER: K100-00492  
SHEET: 1 of 1

NOTES:  
1. DO NOT SCALE FROM DRAWING.  
2. LINE ITEM ON SALES ORDER, SEE SALES ORDER FOR REQUIREMENT.

K100-00492