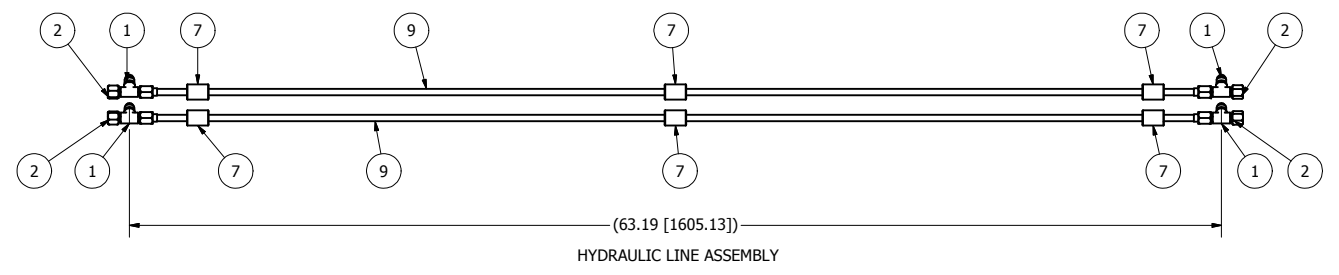
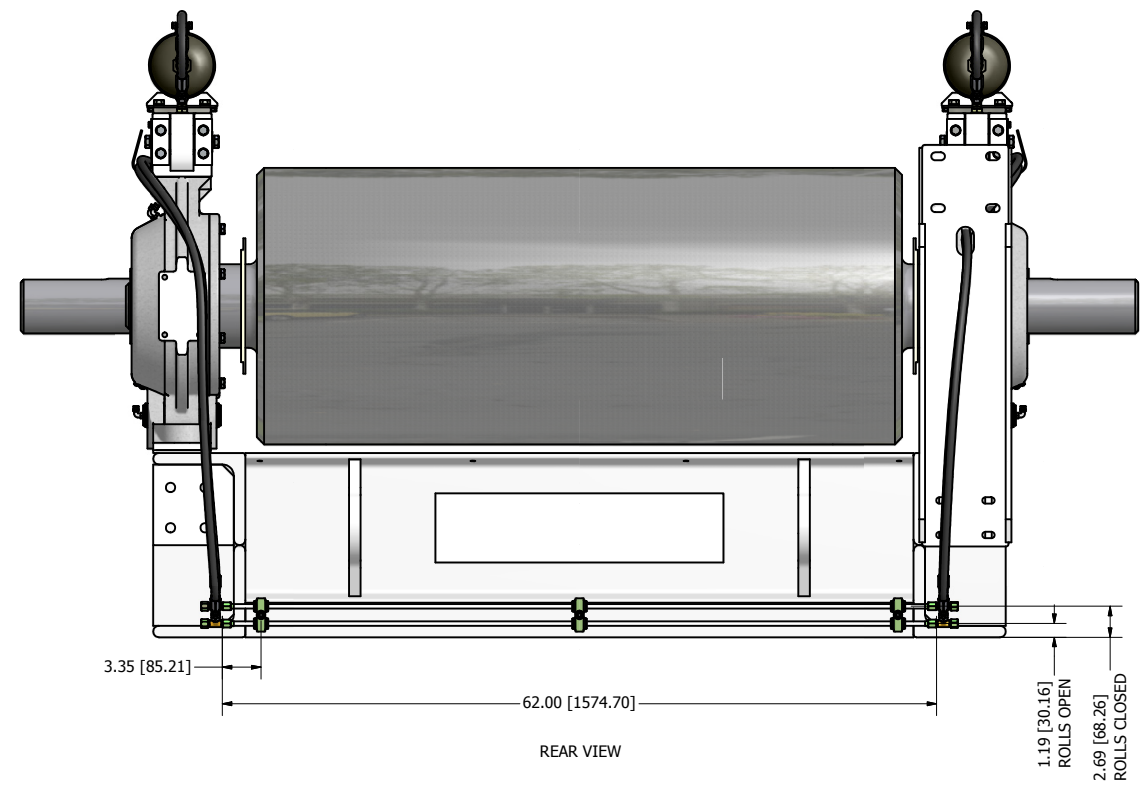
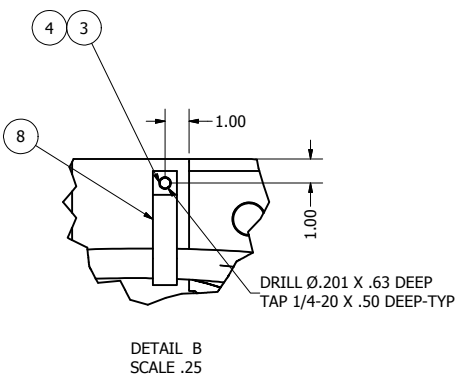
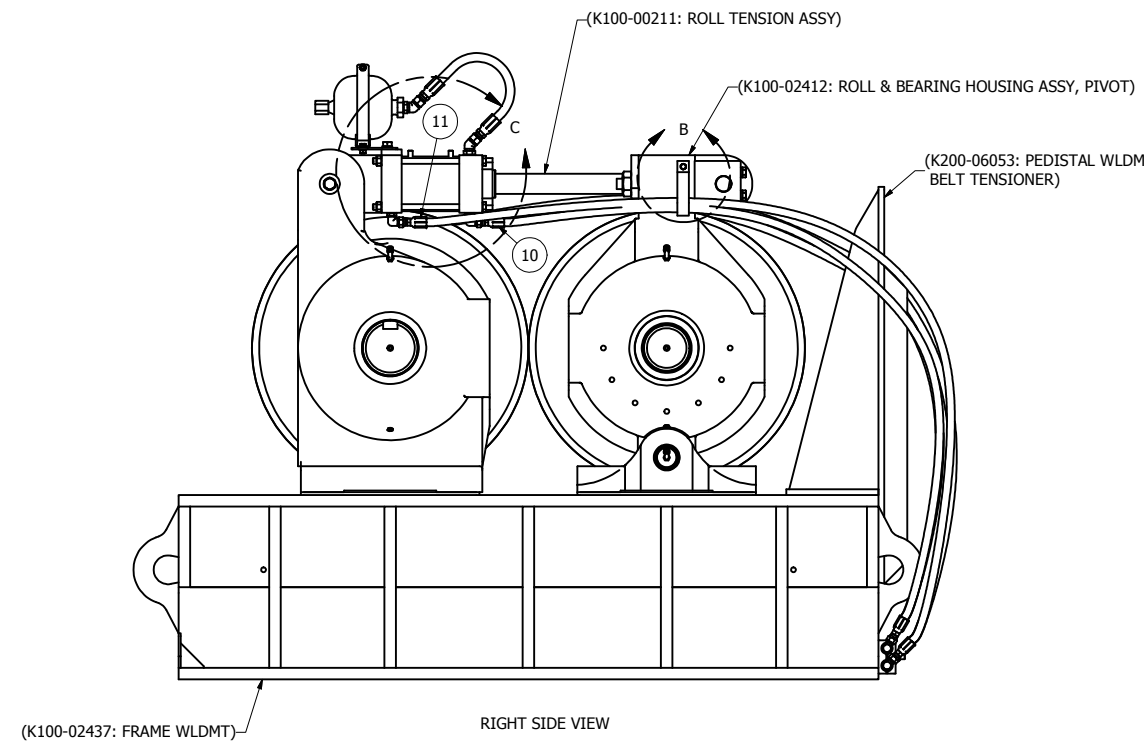
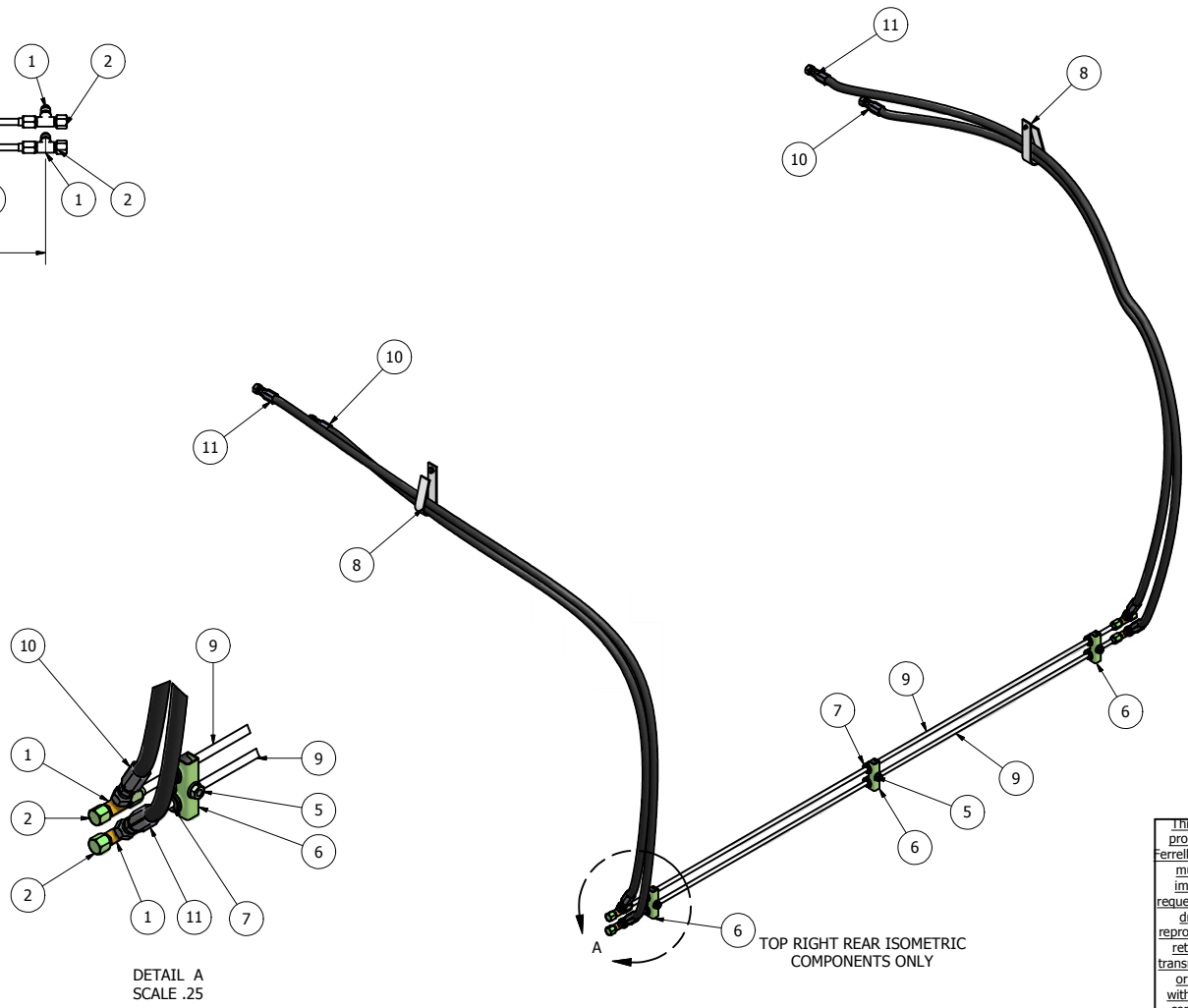
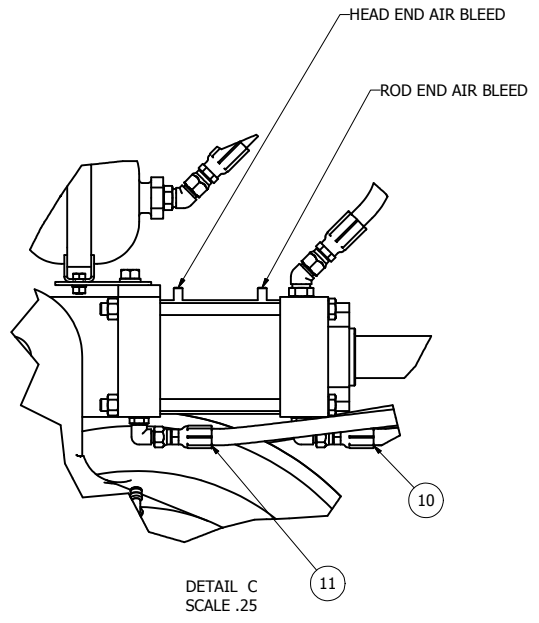


REV	ECN	DESCRIPTION	DATE	APPROVED
A	K010147	RELEASED	10/29/2001	PG



**HYDRAULIC SYSTEM AIR BLEED PROCEDURE**

1. CLOSE ROLLS & LOOSEN ROD END AIR BLEED SCREW. DO NOT REMOVE SCREW, LOOSEN ONLY ENOUGH TO BREAK THE SEAL. TIGHTEN SCREW.
2. OPEN ROLLS & REPEAT #1 FOR HEAD END AIR BLEED SCREW.
3. REPEAT #1 & 2 UNTIL ALL AIR IS REMOVED FROM THE SYSTEM.



ITEM	PART NUMBER	QTY	DESCRIPTION
11	K909-19961	2	HOSE, HYD 6G1-6FJX-6FJX 80.00"
10	K909-19955	2	HOSE, HYD 6G1-6FJX-6FJX 74.00"
9	K200-05899	2	TUBING, HYDRAULIC 24 X 56"
8	K200-02066	2	HANGER, HYDRAULIC HOSE
7	80000510	6	BSHG, SPLIT RBBR .38 X .88 X 1.25"
6	70001017	3	CLAMP, HYD TBG 1.50" HC-10-2
5	66784400	3	NUT, HEX SERR LOCK 3/8-16
4	66443300	2	WASHER, LOCK HELICAL 1/4"
3	62583312	2	HHCS, 1/4-20 X 1/2"
2	53070006	4	CAP, NUT 3/8 JIC A66-6
1	53061006	4	TEE, UNION AC3200-6

This drawing is the property of the A.T. Ferrell Company, Inc and must be returned immediately upon request. No part of this drawing may be reproduced, stored in a retrieval system or transmitted in any form or by any means, without prior written consent of the A.T. Ferrell Company, Inc.

**CAD**  
NO MANUAL CHANGES  
TOLERANCES EXCEPT AS NOTED

**Ferrell-Ross**  
MATERIALS PROCESSING & RECOVERY  
SINCE 1869

DECIMAL: .005	FINISH: NONE	SCALE: 0.12:1	DRAWN BY: pggalea	APPROVED BY: DMJ
FRACTIONAL: 1/32	TITLE: HYDRAULIC ASSY, DUAL DRIVE 24 X 56"	DATE: 10/29/2007	SIZE: D	PART NUMBER: K100-02438
ANGULAR: ±1/2-				SHEET: 1 of 1

**NOTES:**

1. DO NOT SCALE FROM DRAWING.
2. ONE PIECE REQUIRED PER K000-02456: ROLLER MILL ASSY, DUAL DRIVE FL 24 X 56".
3. ONE PIECE REQUIRED PER K000-02460: ROLLER MILL ASSY, DUAL DRIVE RF/ OS 24 X 56".
4. ALTERNATIVE UNITS [X.X] IN MILLIMETERS.
5. HYDRAULIC OPERATING PRESSURE 800-1200 PSI / 56.2-84.4 kg/sq cm. MAXIMUM RECOMMENDED HYDRAULIC PRESSURE 1800 PSI / 126.6 kg/sq cm.

K100-02438

A

A