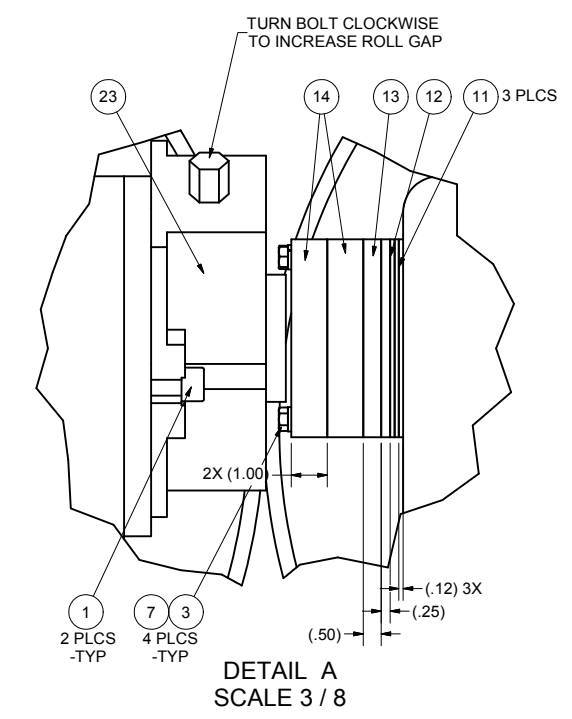
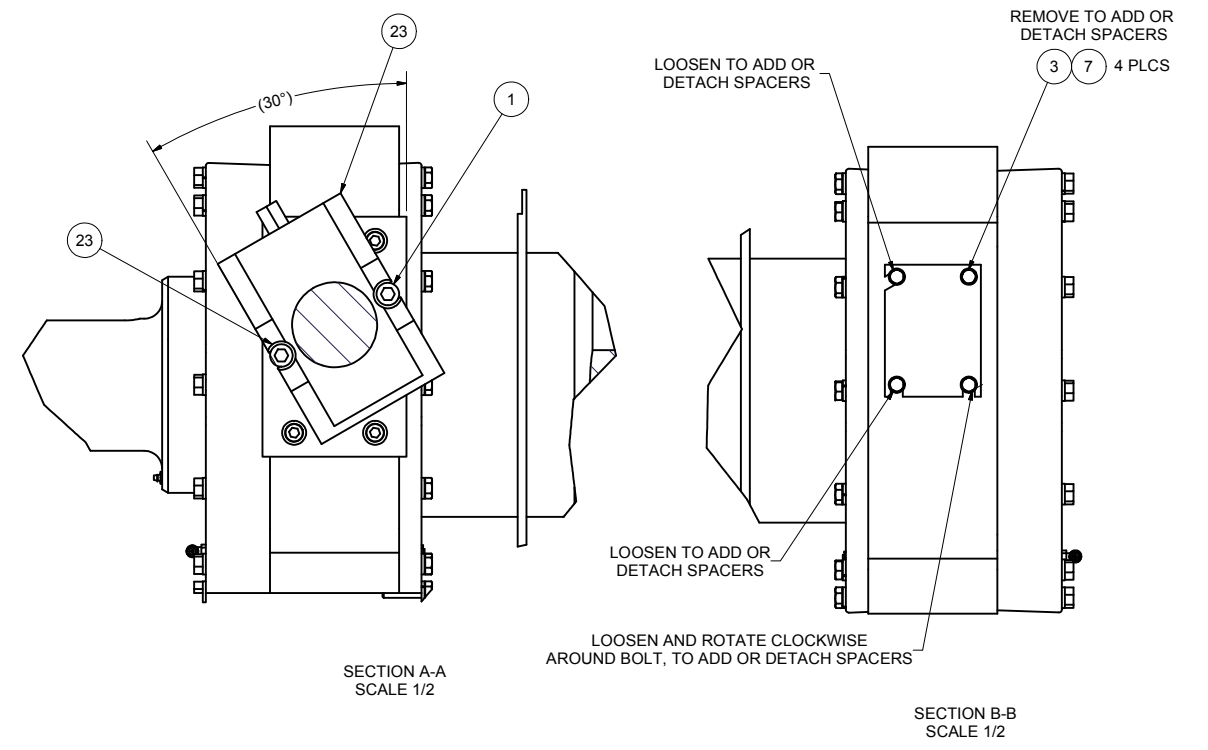
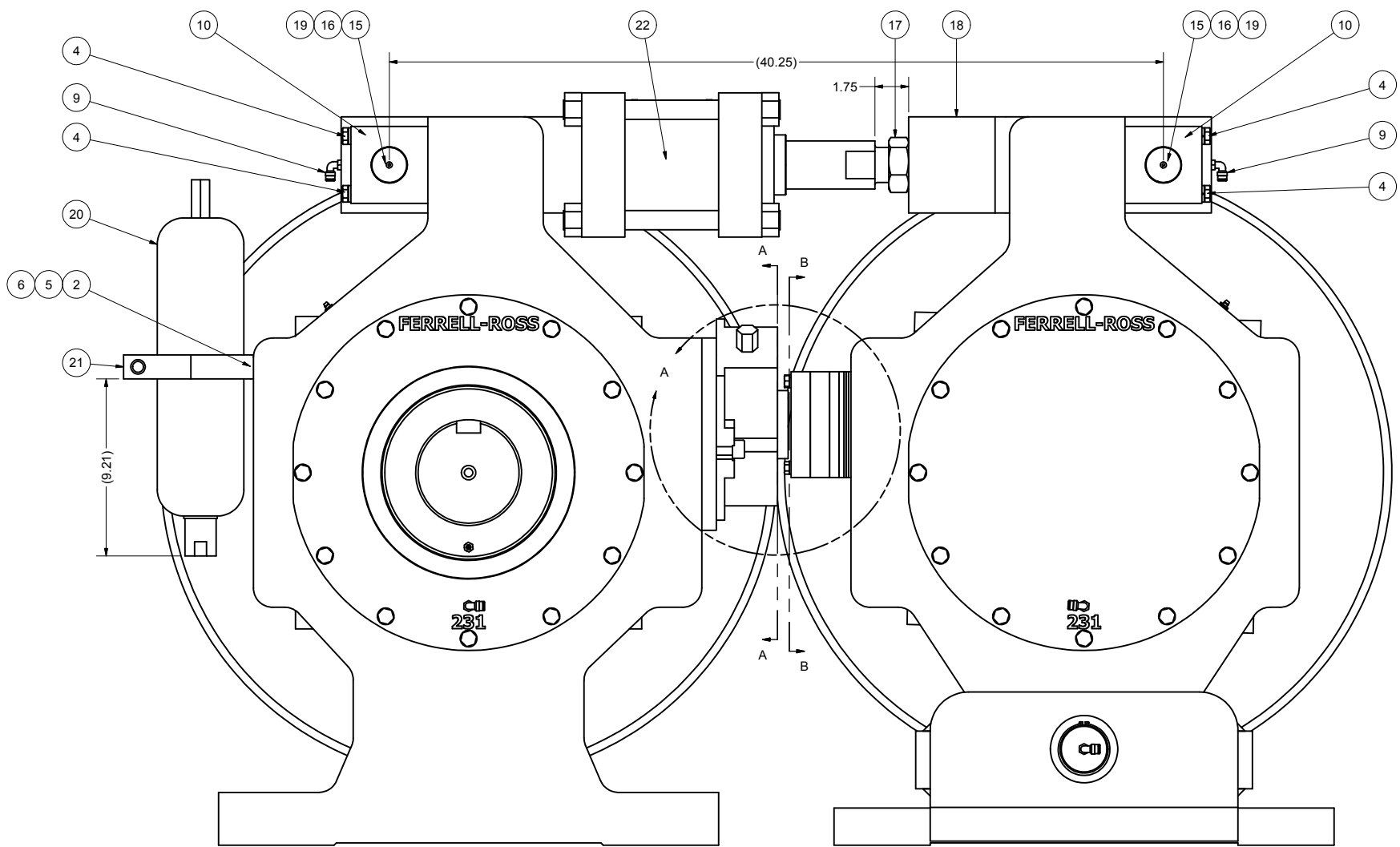
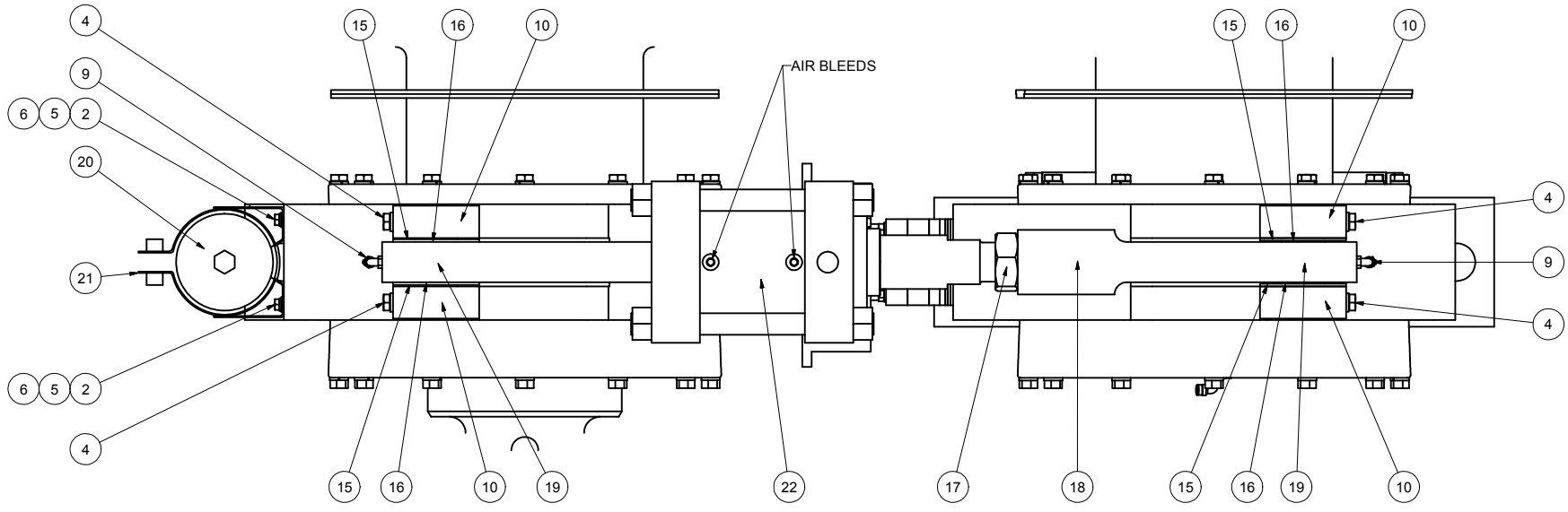


REV	ECN	DESCRIPTION	DATE	APPROVED
A	K050006	RELEASE	3/30/2005	rawuthrich
B	K090134	RELEASE K100-03217.IAM, DELETE K100-03217A.IAM & -X.IAM	4/29/2009	dmjohnson



ITEM	PART NUMBER	QTY	DESCRIPTION
23	K910-01601	1	FIXATOR, RK3 W/OPTION B.F&MON
22	K909-31587	1	CYL, HYD-ORTMAN 6.0 X 2.0" 3TH W/CLEVIS
21	K909-01673	1	CLAMP BRACKET, ACCUMULATOR 150 CU IN.
20	K909-01672	1	ACC, 150 CU IN 3000 PSI BA005B3T01A1
19	K902-00251	2	BRNG, SPHER 20SF32TT TORRINGTON
18	K200-06889	1	CLEVIS, ROLL TENSION 32"
17	K200-06023	1	NUT, JAM 1.875-12, HYD CYL 28"
16	K200-03834	2	PIN, CLEVIS 28"
15	K200-03833	4	SPACER, CLEVIS 28"
14	K200-03706	2	SPACER, POSITIVE STOP, 1.00" 28 X 56"
13	K200-03705	1	SPACER, POSITIVE STOP, 1/2" 28 X 56"
12	K200-03704	1	SPACER, POSITIVE STOP, 1/4" 28 X 56"
11	K200-03703	3	SPACER, POSITIVE STOP, 1/8" 28 X 56"
10	K200-03660	4	CLEVIS, CYLINDER, 28"
9	70012050	2	CPLG, ELBOW 90 1/8-27M NPT X 1/4" TBG
8	66445200	8	WASHER, LOCK HELICAL 1/2"
7	66444400	4	WASHER, LOCK HELICAL 3/8"
6	66443800	2	WASHER, LOCK HELICAL 5/16"
5	66403800	2	WASHER, FLAT, 5/16" TYPE A
4	62585255	8	HHCS, 1/2-13 X 5.00"
3	62584451	4	HHCS, 3/8-16 X 4.00"
2	62583817	2	HHCS, 5/16-18 X .75"
1	61275828	2	SHCS, 5/8-11 X 1.50"

NOTES:
 1. DO NOT SCALE FROM DRAWING.
 2. TWO PIECES REQUIRED PER K000-06802: ROLLER MILL ASSY, DUAL DRIVE, FL 32 X 68".
 3. ASSEMBLY SHOWN FOR RIGHT HAND SIDE, ASSEMBLY SYMMETRICALLY OPPOSITE FOR LEFT HAND SIDE.
 4. ENSURE ROLLS ARE PARALLEL & EQUALLY GAPPED. GAP ENTIRE LENGTH OF ROLLS W/FEELEER GUAGES BEFORE SETTING FIXATOR STOPS.

This drawing is the property of the A.T. Ferrell Company, Inc and must be returned immediately upon request. No part of this drawing may be reproduced, stored in a retrieval system or transmitted in any form or by any means, without prior written consent of the A.T. Ferrell Company, Inc.

CAD
 NO MANUAL CHANGES
 TOLERANCES EXCEPT AS NOTED

Ferrell-Ross
 MATERIALS PROCESSING & RECOVERY
 SINCE 1869

DIVISION OF A. T. FERRELL COMPANY
 BLUFFTON, INDIANA - USA

DECIMAL: .005	FINISH: NONE	SCALE: 1:4	DRAWN BY: dmjohnson	APPROVED BY: DMJ
FRACTIONAL: 1/32	TITLE: ROLL TENSION ASSY, FL 32 X 68"	DATE: 4/29/2009	SIZE: D	PART NUMBER: K100-03217
ANGULAR: 1/2-				SHEET: 1 of 1