

SERVICE MANUAL
AND
PARTS CATALOG
FOR YOUR
SUPER 498BD



Grain, Seed and Bean Cleaners

1440 SOUTH ADAMS STREET BLUFFTON, INDIANA 46714 (800) 248-8318
Updated 5-21-21

www.atferrell.com

SUPER 498BD CLEANER PARTS SET UP WITH BRUSH SCREEN CLEANING

Top Fan Section

ITEM NO.	PAGE NO.	PART NUMBER	QTY.	DESCRIPTION
All	26	Not Available	1	Air Trunk Assembly Complete (Includes Below)
5	3	F01601700	1	Fan Shaft 1-15/16" X 74"
10	3	F92400024	2	1-15/16" Bearing Insert (A-Frame Housing not Available)
18	3	F05502400	2	8" Wide Hide Static Fan Assembly
215	26	F05501202	1	Right Side Top Fan Housing Assembly (Includes 2 Sides & Metal)
215	26	F05501205	1	Left Side Top Fan Housing Assembly(Includes 2 Sides & Metal)
15	1	F05003900	2	Top Fan Bleeder Inlet Slide Assembly
12	1	F04303136	1	Adjusting Handle & Rod 36" Long (Includes Handle With Knob)
**	1	F04001600	1	Hand Crank Handle with wood Knob
4	1	F05313000	2	Adjusting handle shaft Bearing
		F01013500	2	Valve Control Assy Complete See attached picture

****Refers to the previous listing number. May give parts within that assembly, right side-left side numbers, or numbers for parts that are specific to RH or LH machines.**

Note: Front of the Machine is Where the Screens are Inserted Into the Machine. Discharge Spouts are Determined by Standing at the Front and Facing the Machine. Right Hand Discharge Spouts Would Discharge Towards Your Right Hand.

TOP AIR DISCHARGE VALVE ASSEMBLY

ITEM NO.	PAGE NO.	PART NUMBER	QTY.	DESCRIPTION
21	ALL	F04500001	1	Complete Valve (8 wide)(Shaft not Included)
20	4	F01614600	1	Top Valve Shaft 1" x 55" (Measure Length)
22	4	F04800002	1	Hinged Gate Weldment 34-3/8"
**		F04600510	1	Gate Board
**		F92700004	2	Gate Springs
23	4	F04501402	1	#8 Discharge Roll Assembly with Flanges (Around 34" Long) Measure Roll Length
25	4	40000038	4	1" Bore Flangette Stampings
186	4	F92460200	2	1" Bearing

NOTE: ASSEMBLY DOES NOT INCLUDE DRIVE SHEAVES OR SHAFT

Brush Cleaning System

ITEM NO.	PAGE NO.	PART NUMBER	QTY.	DESCRIPTION
38	7	F01004902	3	Brush Adjusters - Idler Side / Right Hand Side(Includes Parts Below)
	7	F01106104	1	Brush Adjusting Plate Right Hand
43	7	F01106300	1	Idler Arm Support
43	7	F82080060	1	Shoulder Bolt for Brush Adjuster
39	7	F01003002	3	Brush Adjusters-Control Side / Right Hand Side(Includes Parts Below)
**	7	F01106003	1	Brush Idler Plate Right Hand
42	7	F01105400	1	Adjustments Handle with Spring
42	7	F82080060	1	Shoulder Bolt for Brush Adjuster
38	7	F01004901	3	Brush Adjusters - Idler Side / Left Hand Side (Includes Parts Below)
		F01106001	1	Brush Adjusting Plate Left Hand
43	7	F01106300	1	Idler Arm Support
43	7	F82080060	1	Shoulder Bolt for Brush Adjuster
		F01000200	12	Rope Sheave Assembly Complete See attached picture
		F09501900	3	Brush Carrier Assembly 25" x 46" See attached picture 10
		F01612102	3	Brush Carrier Shafts 1-3/16" x 64"
		F97700063	55	Wirelon Plastic Coated Steel Cable (In Feet)

BOTTOM FAN ASSEMBLY

ITEM NO.	PAGE NO.	PART NUMBER	QTY.	DESCRIPTION
		F01615901	1	Fan Shaft 1-1/2" X 79" (Includes Keys) See attached picture 11 & 12
		Not Available	2	6715 Halfmoon Bridgetree Housing with Bearing
		F92400022	2	Bearing <u>Insert Only</u> for Above
		Note: If housing is bad Items below must be substituted		
		F92401080	2	1-1/2" Pillow Block Bearing
		F02707300	2	Bridgetree Mounting Angle for Bearing
201	25	F06302030	1	Bottom Drum Iron 57-5/8" x 80"
203	25	F06302130	1	Discharge Chute 4"
204	25	F06304304	1	Breast Iron 57-5/8" x 26-1/2"

ECCENTRIC SHAFT ASSEMBLY

ITEM NO.	PAGE NO.	PART NUMBER	QTY.	DESCRIPTION
		F01611900	1	Eccentric Shaft 1-1/2" X 78-1/2" (Includes Keys) See attached pictures 15 & 16
		Not Available	2	6714 Halfmoon Flange Bearing
		F92400022	1	1-1/2" Bearing <u>Insert Only</u> for Below
		F92053126	1	6714 Flange Bearing Conversion Kit
		Not Available	1	7475 1-1/2" Halfmoon Bearing Complete w/Bearing
		F92400026	1	1-1/2" Halfmoon Bearing <u>Insert Only</u> for Above
		F19503600	2	1-1/2" Throw Eccentric Assembly Complete See attached picture 15B

NOTE: A FEW OF THE NEWER MACHINES HAD COUNTERWEIGHTS ADDED TO THE ECCENTRIC SHAFT

F01104600	4	Counterweight Ends
F01804405	2	Counterweight 16-1/2"

MAIN SHOE ASSEMBLY

ITEM NO.	PAGE NO.	PART NUMBER	QTY.	DESCRIPTION
		NOT AVAILABL	1	Bottom Shoe Complete with Rockers (Right Hand Discharge)
		F03118601	1	Right Shoe Side
		F03118602	1	Left Shoe Side
		F03500400	1	Apron Assembly
		F08-----	1	Sand Spout Left Hand Machines (Check Measurements)
		F08-----	1	Sand Spout Right Hand Machines (Check Measurements)
		F08-----	1	Straw Spout Left Hand Machines (Check Measurements)
		F08-----	1	Straw Spout Right Hand Machines (Check Measurements)
			3	Rocker adjusting system See attached picture
		F03500210	2	Top Rocker Assembly Complete See attached drawing
		F03500310	1	Bottom Rocker Assembly Complete See attached drawing
		F03016510	2	Front Hanger with Block on Both Sides
		F03102601	2	Shoeside Hanger Support Block
		F03016520	3	Back Shoe Hanger with Block

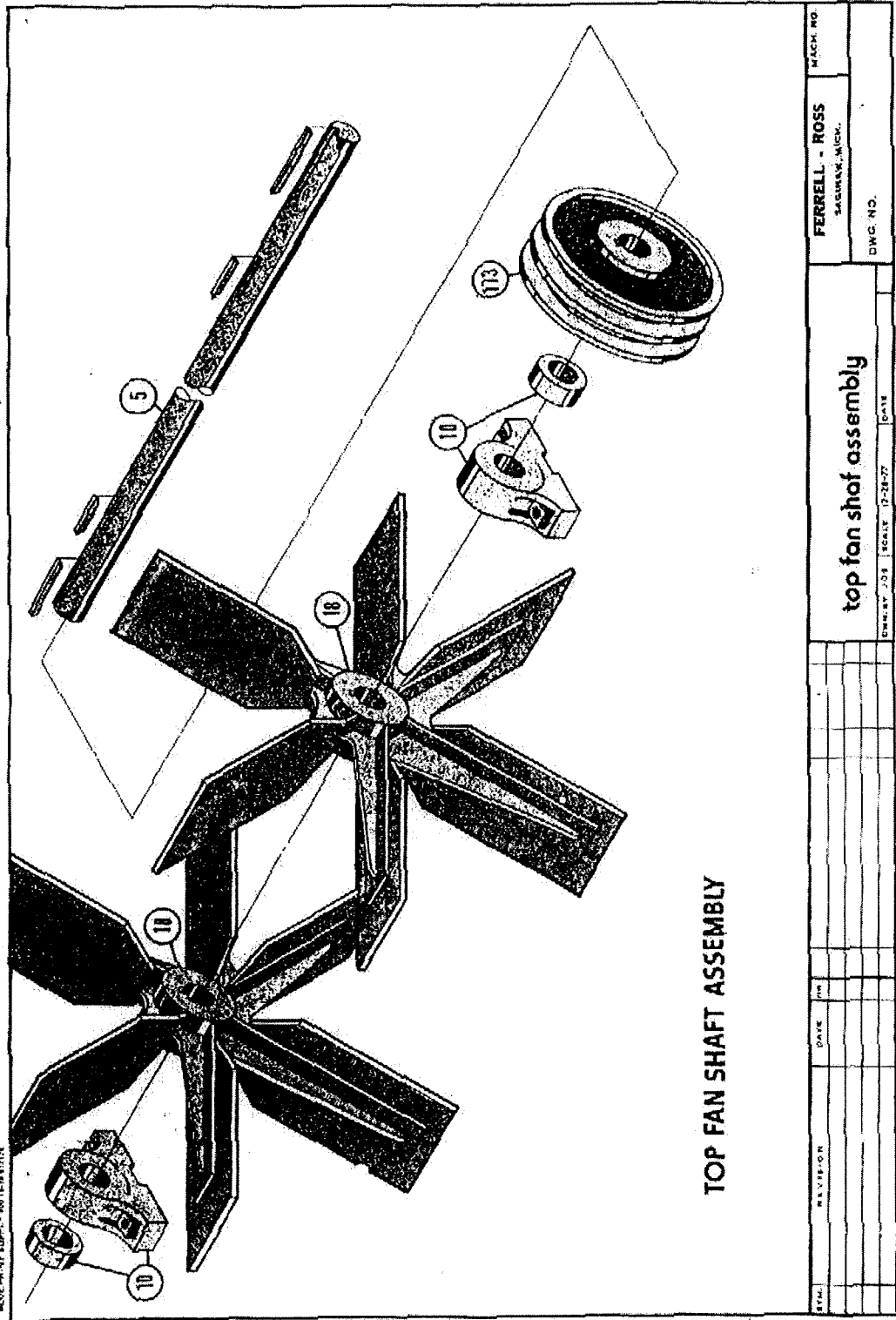
**Discharge Spouts are Determined by Standing at the Front and Facing the Machine.
Right Hand Discharge Spouts Would Discharge Towards Your Right Hand.**

F01002803 1 Single Belt Idler Assembly Complete 5-1/2"
See attached drawing

**The Following Are the Ball Tray Kit Parts That were
Installed on the Super 498 Cleaners in the Past**

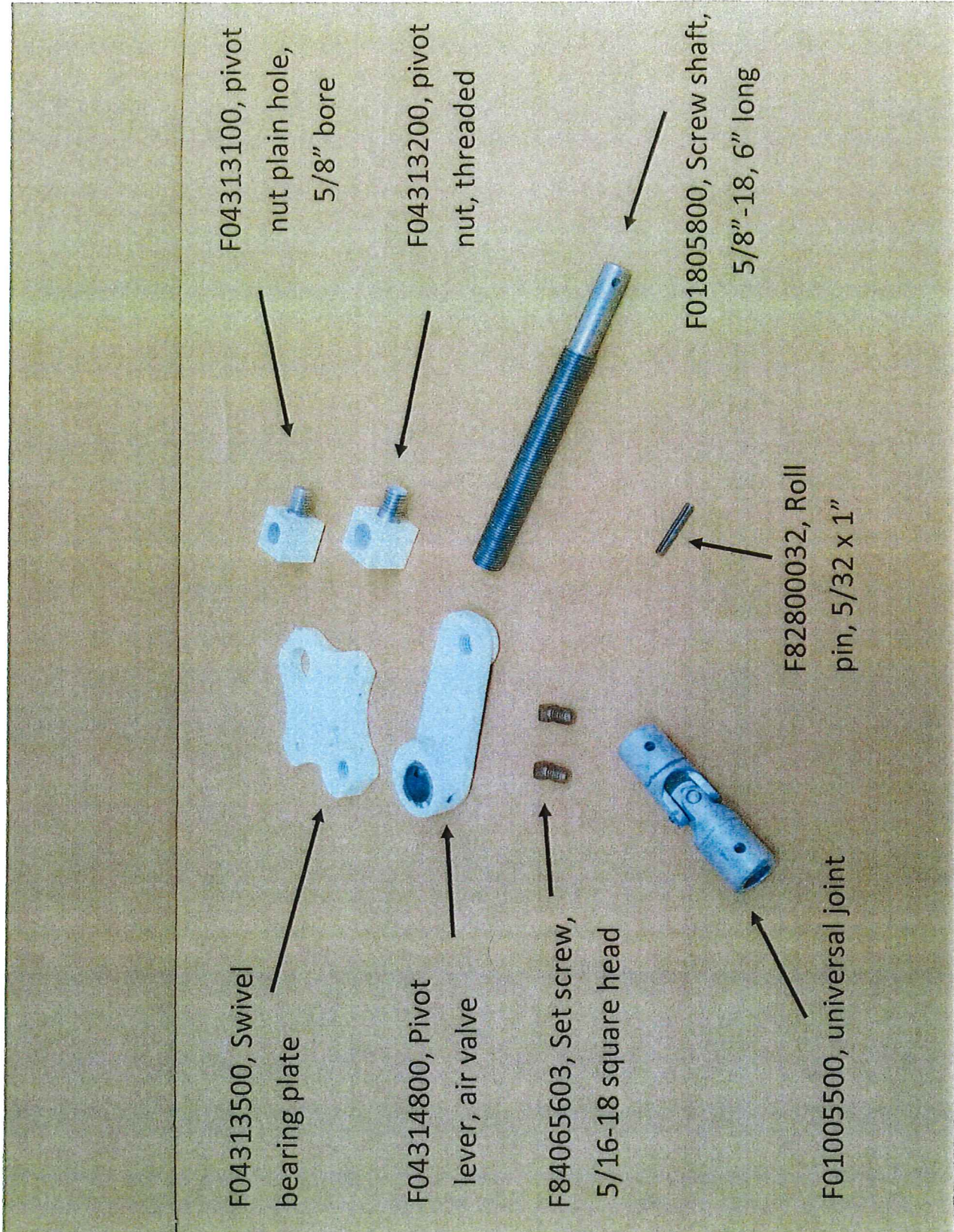
**Old Style Ball Trays with 1" Square Turkey Wire That Came Out
With the Screens. Ball Trays were not attached to the Screens.**

F90005061	3	Ball Tray Weldment for 1 Piece Screens (NEW PUNCHED STYLE)
F80026102	432	White 1-3/8" Balls
		or
F90005057	3	Ball Tray Weldment for 2 Piece Screens (Bottom 26" Section) (NEW PUNCHED STYLE)
F90005068	3	Ball Tray Weldment for 2 Piece Screens (For Top 34" Section) (NEW PUNCHED STYLE)
F80026102	432	White 1-3/8" Balls (54 Per Tray)
F11301707	6	Ball Tray Support Rail 24"
F11301708	6	Ball Tray Support Rail 31"



TOP FAN SHAFT ASSEMBLY

REV.	REVISION	DATE	BY	DATE	SCALE	12-28-27	DATE	DWG. NO.	FERRELL - ROSS SAGINAW, MICH.	MACH. NO.



F04313500, Swivel bearing plate

F04314800, Pivot lever, air valve

F84065603, Set screw, 5/16-18 square head

F04313100, pivot nut plain hole, 5/8" bore

F04313200, pivot nut, threaded

F01805800, Screw shaft, 5/8" -18, 6" long

F82800032, Roll pin, 5/32 x 1"

F01005500, universal joint

F01013500, Gate valve adjusting assembly, ALL

F01000200, Complete rope sheave assembly



F01101500, 3" rope sheave holder



F01104300, 1 hole mounting plate



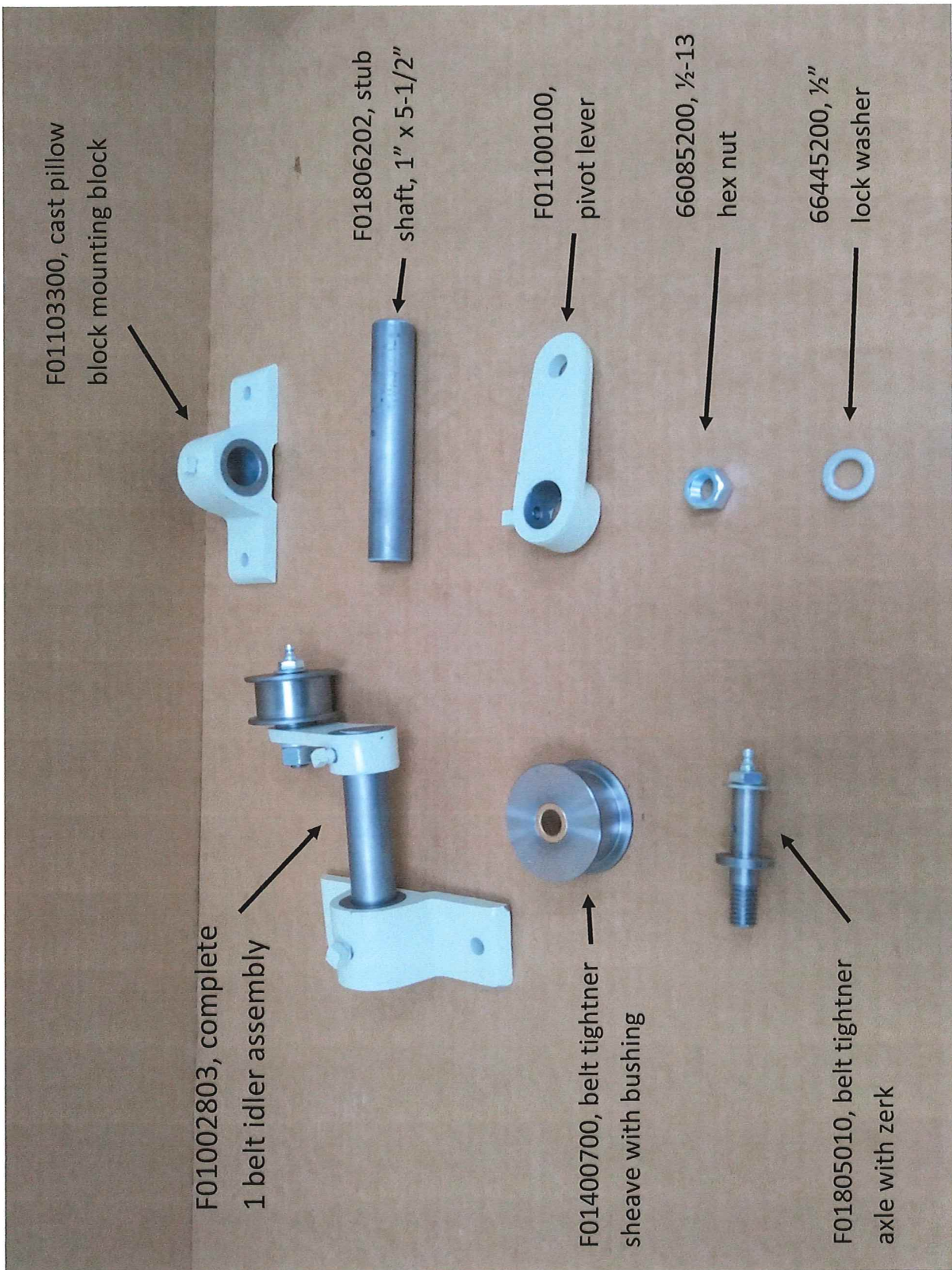
F01401300, 3" rope sheave with bushing



F01802401, rope sheave axle with roll pin



3" Rope sheave assembly



F01103300, cast pillow
block mounting block

F01806202, stub
shaft, 1" x 5-1/2"

F01100100,
pivot lever

66085200, 1/2-13
hex nut

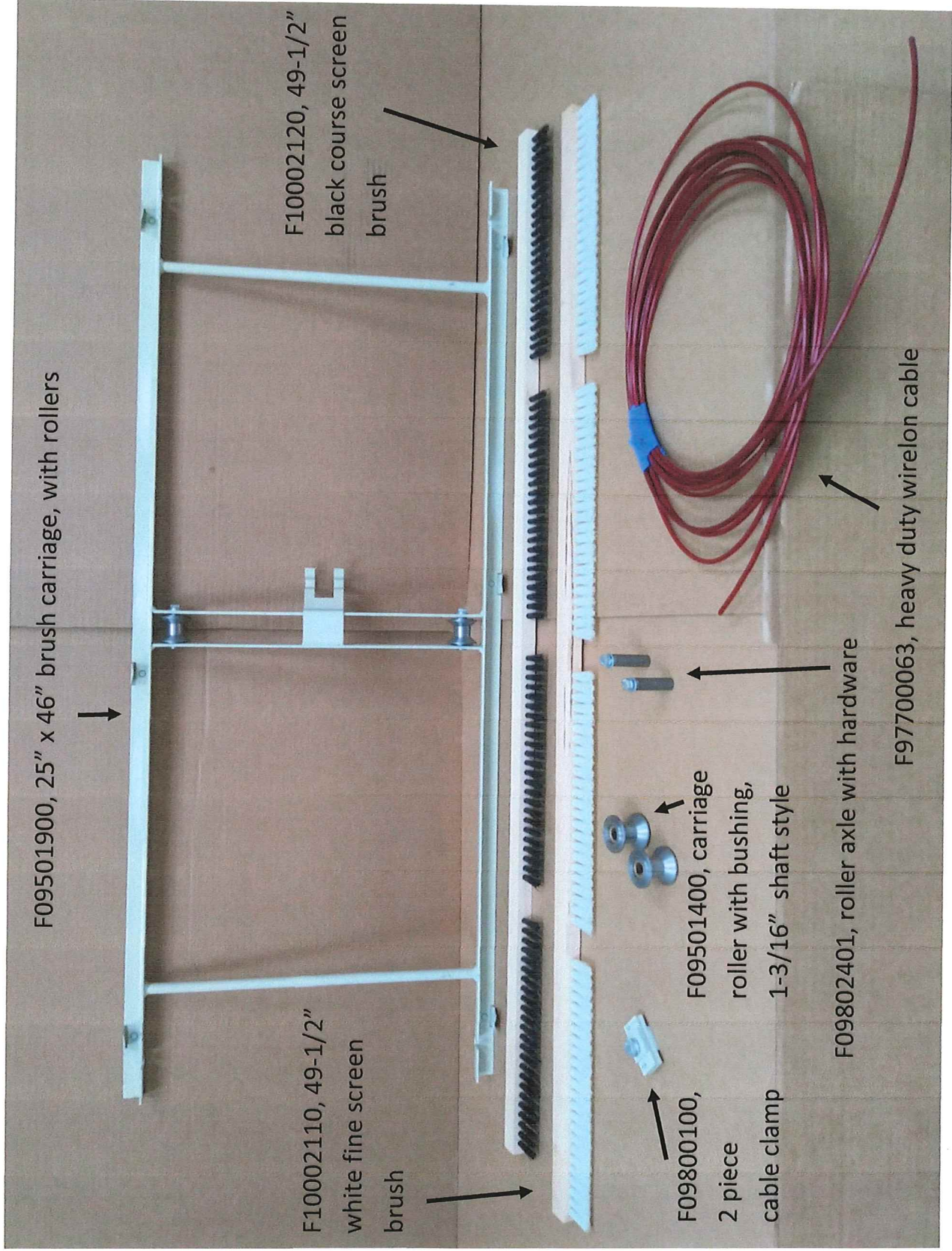
66445200, 1/2"
lock washer

F01002803, complete
1 belt idler assembly

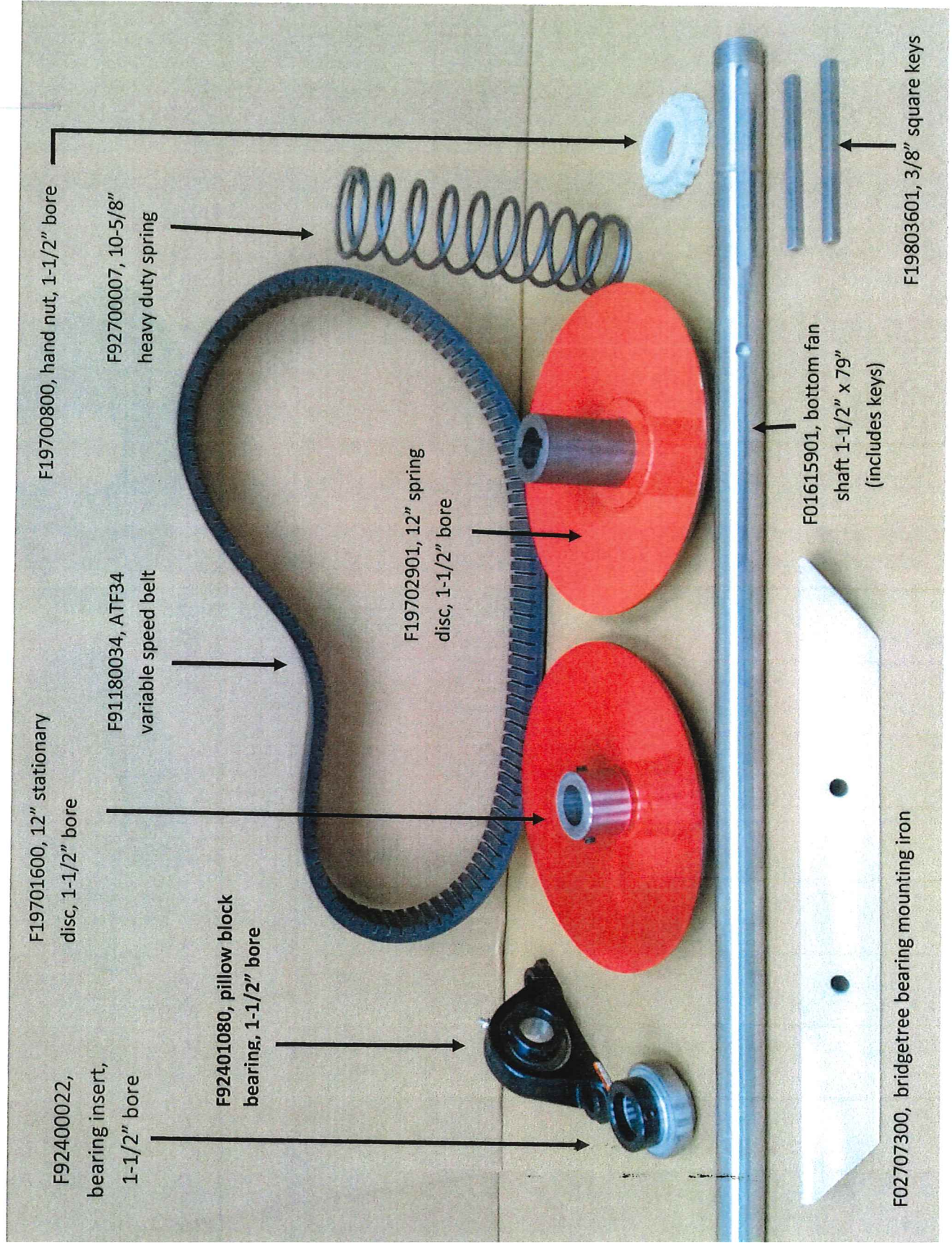
F01400700, belt tightener
sheave with bushing

F01805010, belt tightener
axle with zerck

Belt tightener assembly



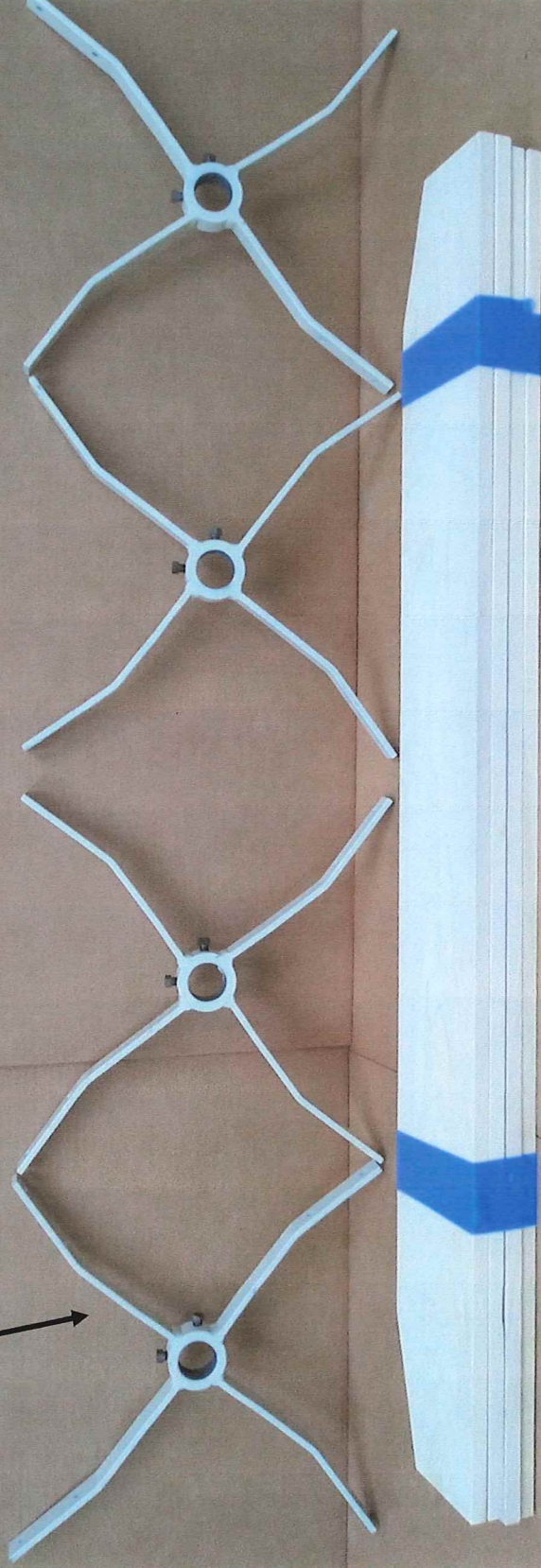
Brush carriage, with accessories, page 10



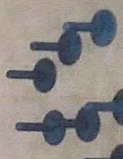
Bottom fan shaft assembly, page 11

F06002778, complete bottom fan assembly

4 pieces, F06001000, bottom fan spider, 1-1/2" bore



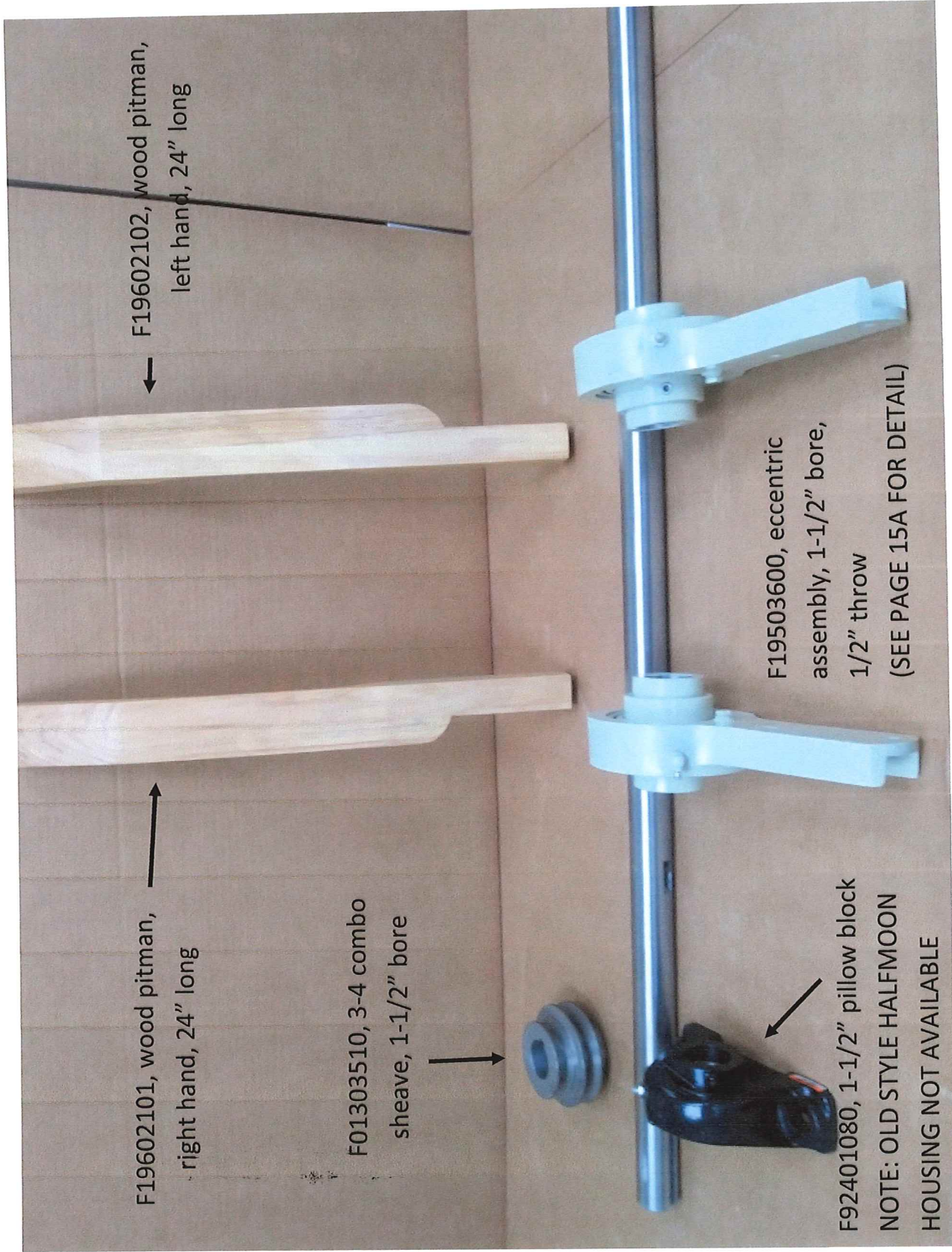
32 pieces, F82021407, elevator bolt, 1/4-20 x 1-1/4"



32 pieces, 66083300, 1/4-20 hex nut
32 pieces, 66443300, 1/4" lock washer

4 pieces, F01701101, bottom fan blade, 55-5/8" long

Bottom fan assembly, 1-1/2" shaft, page 12



F19602101, wood pitman,
right hand, 24" long

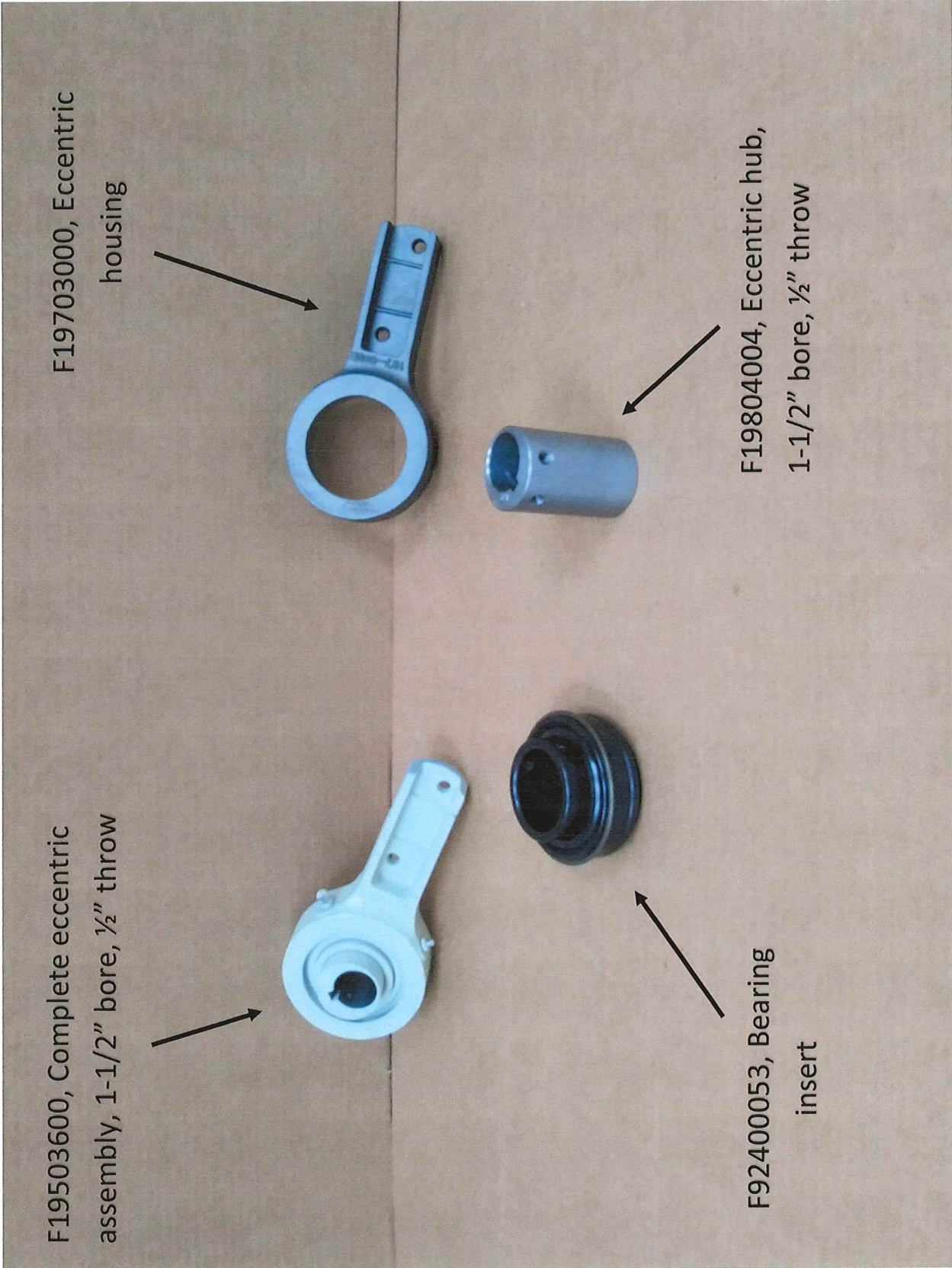
F19602102, wood pitman,
left hand, 24" long

F01303510, 3-4 combo
sheave, 1-1/2" bore

F19503600, eccentric
assembly, 1-1/2" bore,
1/2" throw
(SEE PAGE 15A FOR DETAIL)

F92401080, 1-1/2" pillow block
NOTE: OLD STYLE HALFMOON
HOUSING NOT AVAILABLE

Eccentric shaft, wood pitmans, 49,498, page 15

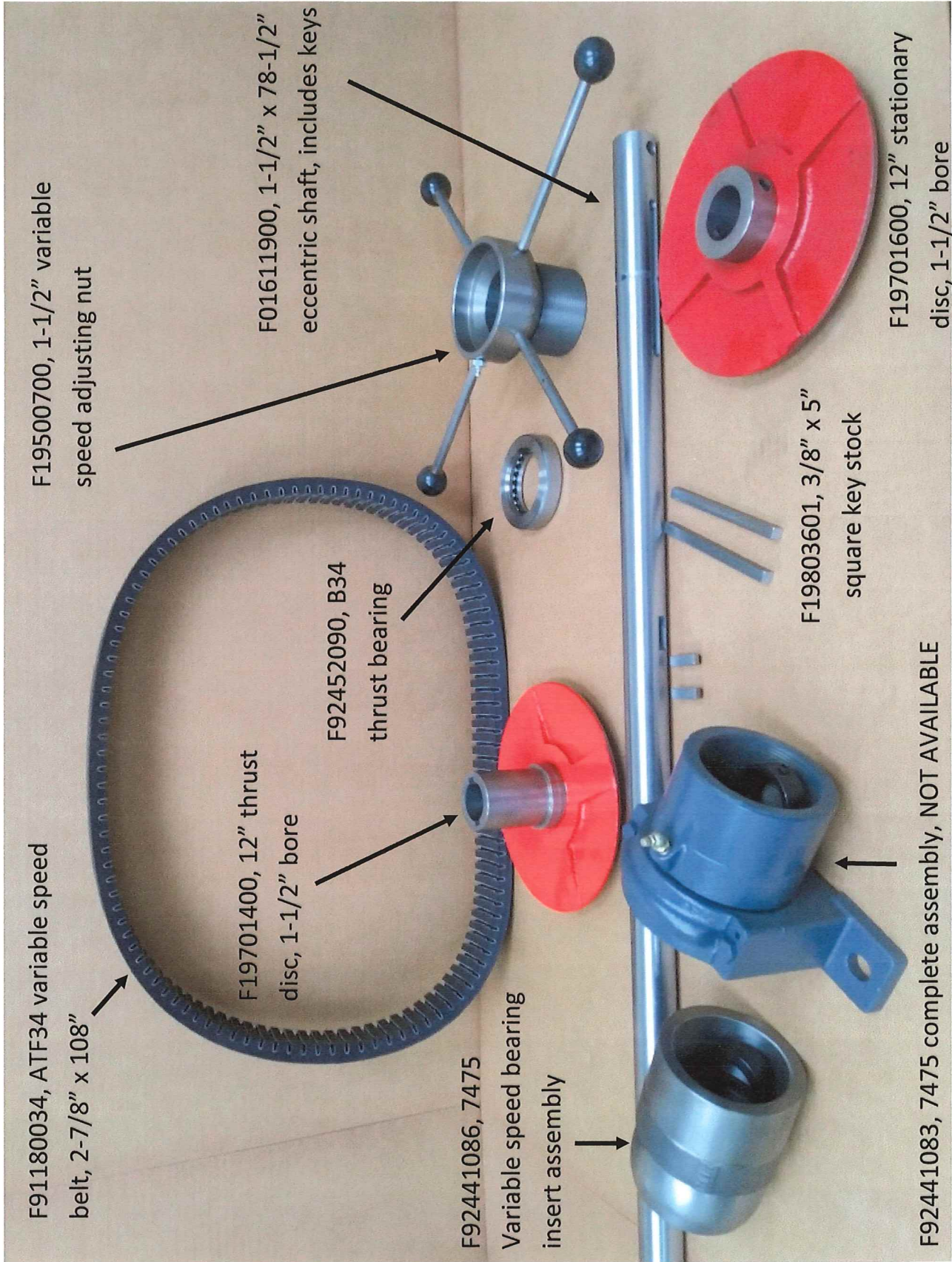


F19503600, Complete eccentric assembly, 1-1/2" bore, 1/2" throw

F19703000, Eccentric housing

F19804004, Eccentric hub, 1-1/2" bore, 1/2" throw

F92400053, Bearing insert



F91180034, ATF34 variable speed belt, 2-7/8" x 108"

F19500700, 1-1/2" variable speed adjusting nut

F19701400, 12" thrust disc, 1-1/2" bore

F01611900, 1-1/2" x 78-1/2" eccentric shaft, includes keys

F92452090, B34 thrust bearing

F92441086, 7475 Variable speed bearing insert assembly

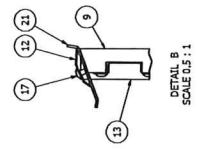
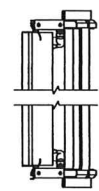
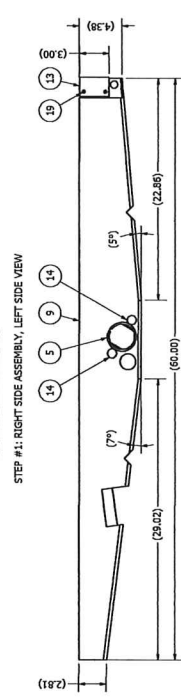
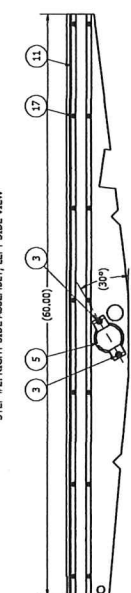
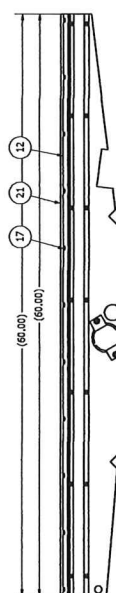
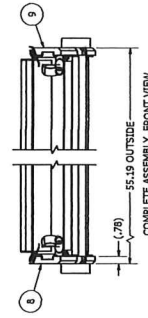
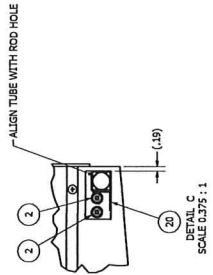
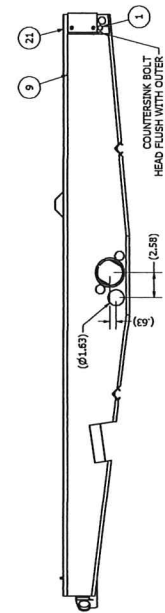
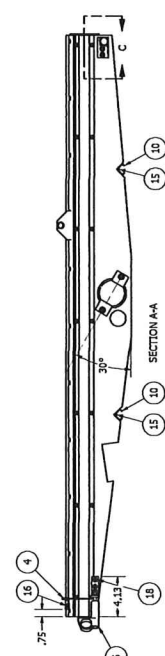
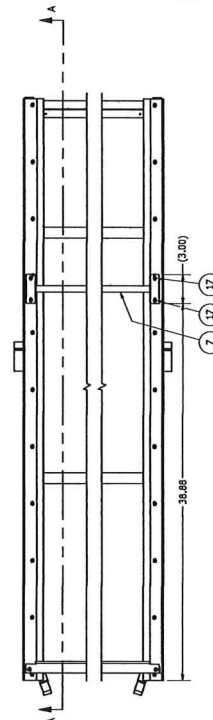
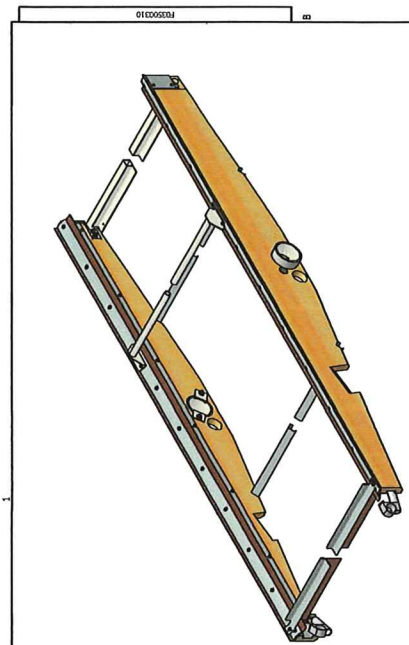
F19803601, 3/8" x 5" square key stock

F19701600, 12" stationary disc, 1-1/2" bore

F92441083, 7475 complete assembly, NOT AVAILABLE

Eccentric shaft assembly, Super 49,498, page 16

REV	EN	DESCRIPTION	DATE	APPROVED
A	XXXXXX	RELEASE	2/19/1951	RH
B	XXXXXX	REBRAMING CAD WAS C SIZE	11/29/2012	amjohansen
C	XXXXXX	ADDED DESCRIPTION OF TRANSPORTABLE GATE AND LOCATION	4/7/2013	jhoose



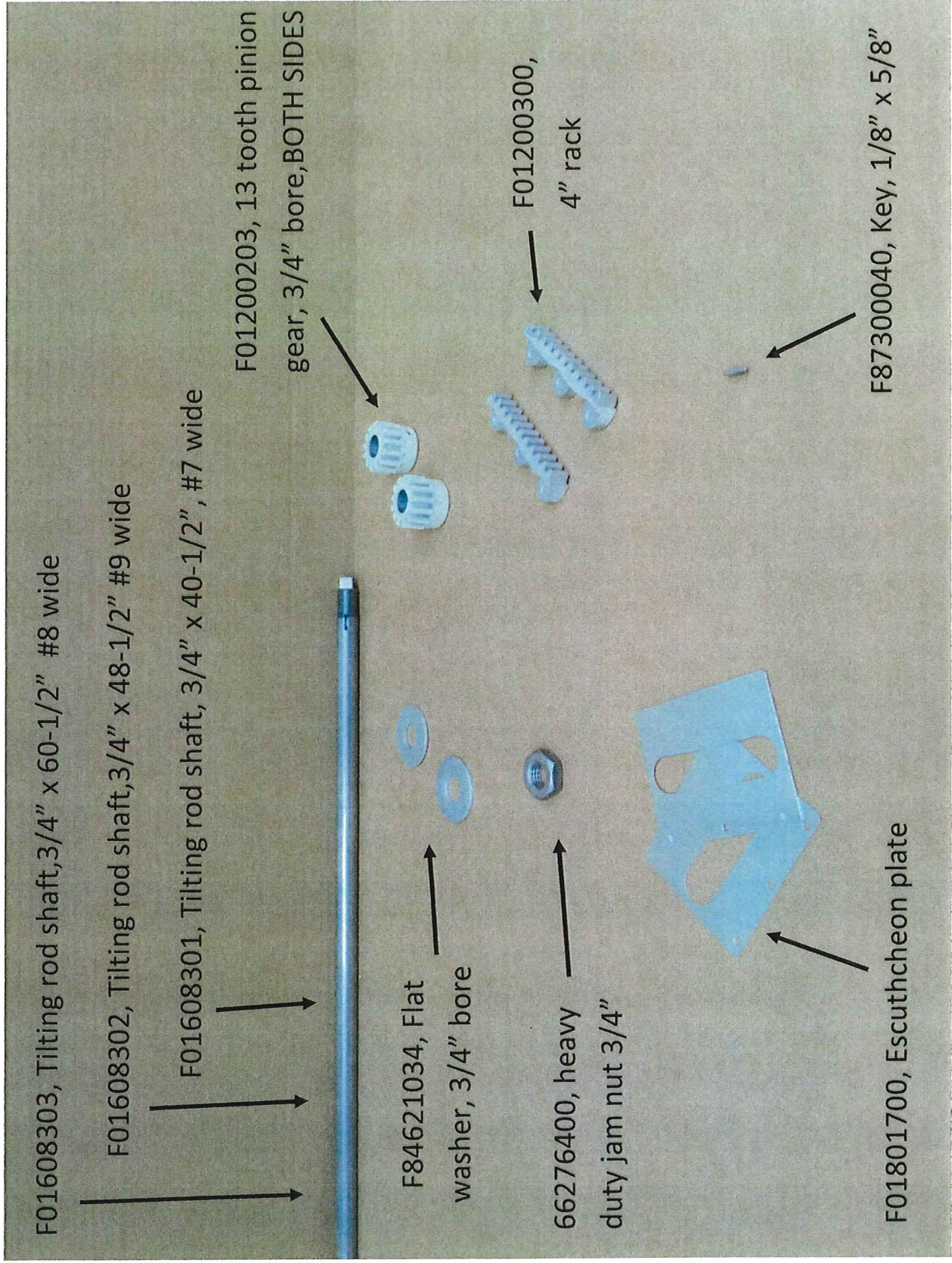
ITEM	PART NUMBER	QTY	DESCRIPTION
21	FR1152005	10.333	FT. BELTING, 3 PLY F505, 2.50' X 62.00"
20	FR2313303	4	SKT. W/DR. ROCKER, STD. TELESCOPING, #8
19	FR2313303	4	SKT. W/DR. ROCKER, STD. TELESCOPING, #8
18	FR2453403	4	SKT. PAN X-HD, #10 X 3/4"
17	FR2453402	54	SKT. PAN X-HD, #8 X 3/4"
16	FR2450101	2	SKT. PAN X-HD, #8 X 1.00"
15	FR2440301	4	SKT. FLAT CROSS HEAD #10 X 1.50"
14	FR2011407	4	BODY, ELEV. 7/4x28 X 1.25"
13	FR3000500	2	ANGLE, SCREEN STD., ROCKER
12	FR3000500	2	ANGLE, SCREEN STD., ROCKER
11	FR3000413	2	LINER, SCREENWAY, ROCKER, 60.00"
10	FR3000002	2	BRACE, BOTTOM, ROCKER, #8
9	FR3600500	1	SIDE, ROCKER, RH BOTTOM, BOTTOM SHOE, 2980
8	FR3600500	1	SIDE, ROCKER, LH BOTTOM, BOTTOM SHOE, 2980
7	FR3500800	1	SCREEN HOOK ASSY, STANDARD
6	FR3500800	1	SCREEN HOOK ASSY, STANDARD
5	FR3110050	2	GRAB STD ASSY, ROCKER, 2.50' X #8
4	FR3110050	2	GRAB STD ASSY, ROCKER, 2.50' X #8
3	FR2783300	4	NUT, HEX SER. LOCK 1/4x20
2	FR2783300	4	NUT, HEX SER. LOCK 1/4x20
1	FR2826256	4	BOLT, CARB. 10-24 X 1.25"

This drawing is a CAD model. No manual tolerances are indicated. Refer to the drawing for tolerances. Reproduction of this drawing without prior written consent of the A.T. Ferrell Company, Inc. is prohibited.

CAD
No manual tolerances are indicated. Refer to the drawing for tolerances. Reproduction of this drawing without prior written consent of the A.T. Ferrell Company, Inc. is prohibited.

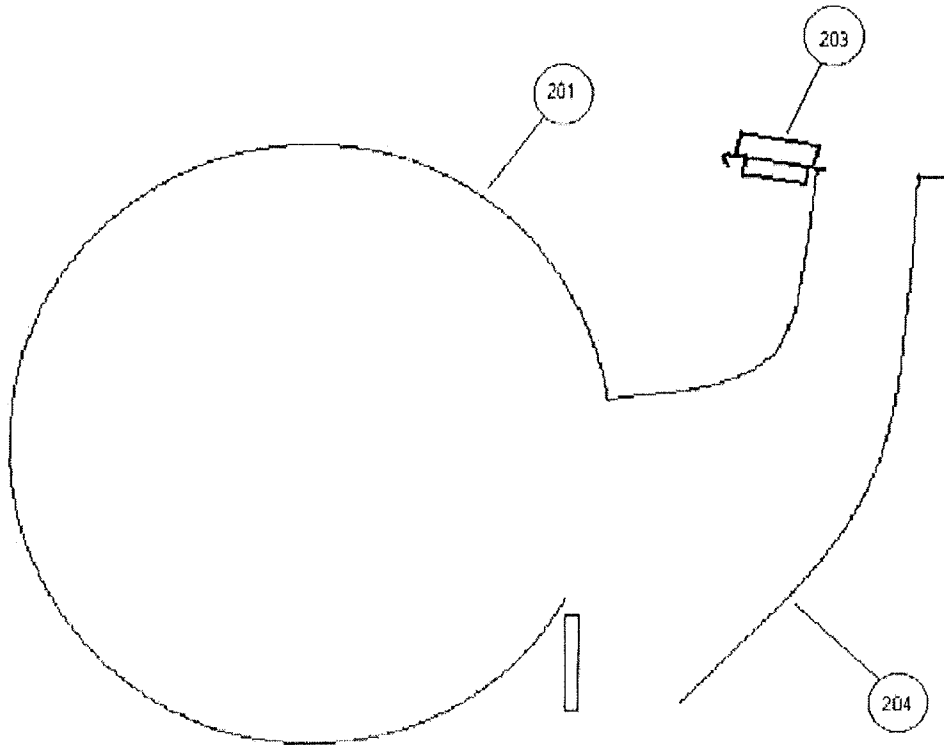
PROJECT: 10/28/2008 D
PART: F03300310
DRAWN BY: amjohansen
CHECKED BY: jhoose
DATE: 11/29/2012
SCALE: 0.375 : 1

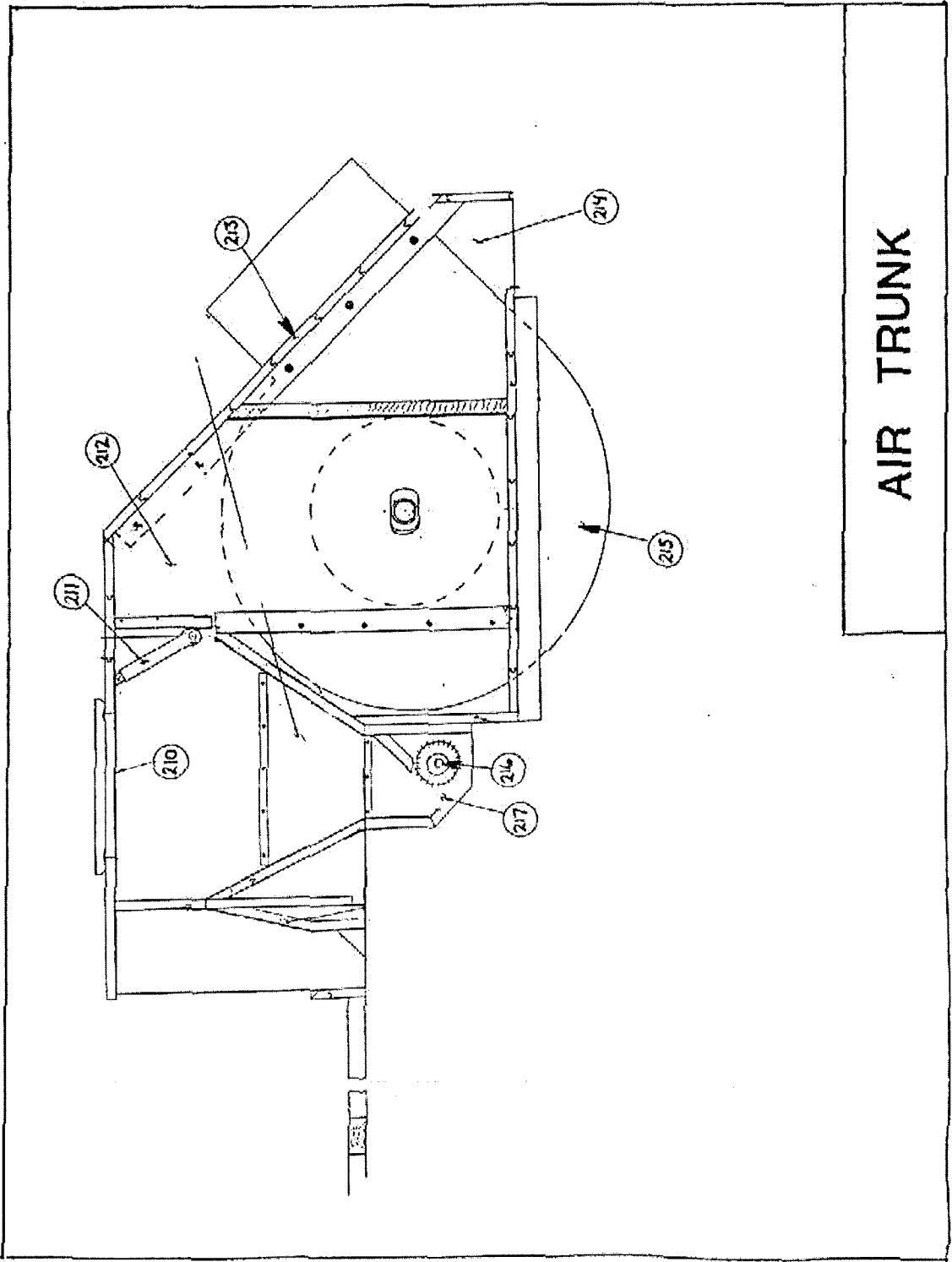
NOTES:
1. DO NOT SCALE FROM DRAWING.
2. ONE PIECE REQUIRED PER F03300107/6: SHOE ASSY, BOTTOM LH/RH W/ROCKERS, 2980.



Screen rocker adjusting assembly

Bottom Fan Metal





AIR TRUNK