

**SERVICE MANUAL**  
**AND**  
**PARTS CATALOG**  
**FOR YOUR**  
**SUPER 498D**



*Grain, Seed and Bean Cleaners*

# SUPER 498D CLEANER PARTS SET UP WITH BRUSH SCREEN CLEANING

## Top Fan Section

ITEM NO.	PAGE NO.	PART NUMBER	QTY.	DESCRIPTION
All	26	<b>Not Available</b>	1	Air Trunk Assembly Complete ( <b>Includes Below</b> )
5	3	F01601700	1	Fan Shaft 1-15/16" X 74"
10	3	F92400024	2	1-15/16" Bearing Insert ( <b>A-Frame Housing not Available</b> )
18	3	F05502400	2	8" Wide Hide Static Fan Assembly
215	26	F05501202	1	Right Side Top Fan Housing Assembly ( Includes 2 Sides & Metal)
215	26	F05501205	1	Left Side Top Fan Housing Assembly( Includes 2 Sides & Metal)
15	1	F05003900	2	Top Fan Bleeder Inlet Slide Assembly
12	1	F04303136	1	Adjusting Handle & Rod 36" Long (Includes Handle With Knob)
**	1	F04001600	1	Hand Crank Handle with wood Knob
4	1	F05313000	2	Adjusting handle shaft Bearing
	1	F01013500	2	Valve Control Assy Complete <b>See attached picture</b>

## TOP AIR DISCHARGE VALVE ASSEMBLY

ITEM NO.	PAGE NO.	PART NUMBER	QTY.	DESCRIPTION
21	ALL	F04500001	1	Complete Valve (8 wide)( <b>Shaft not Included</b> )
20	4	F01614600	1	Top Valve Shaft 1" x 55" (Measure Length)
22	4	F04800002	1	Hinged Gate Weldment 34-3/8"
**		F04600510	1	Gate Board
**		F92700004	2	Gate Springs
23	4	F04501402	1	#8 Discharge Roll Assembly with Flanges ( <b>Around 34" Long</b> ) Measure Roll Length
25	4	40000038	4	1" Bore Flangette Stampings
186	4	F92460200	2	1" Bearing

**NOTE: ASSEMBLY DOES NOT INCLUDE DRIVE SHEAVES OR SHAFT**

## BRUSH SCREEN CLEANING SYSTEM

ITEM NO.	PAGE NO.	PART NUMBER	QTY.	DESCRIPTION
39	7	F01003001	2	Brush Adjusters-Control Side / <b>Left Hand Side(Includes Parts Below)</b>
	7	F01106101	1	Brush Idler Plate Left Hand
42	7	F01105400	1	Adjustments Handle with Spring
42	7	F82080060	1	Shoulder Bolt for Brush Adjuster
38	7	F01004902	2	Brush Adjusters - Idler Side / <b>Right Hand Side(Includes Parts Below)</b>
	7	F01106104	1	Brush Adjusting Plate Right Hand
43	7	F01106300	1	Idler Arm Support
43	7	F82080060	1	Shoulder Bolt for Brush Adjuster
39	7	F01003002	2	Brush Adjusters-Control Side / <b>Right Hand Side(Includes Parts Below)</b>
**	7	F01106003	1	Brush Idler Plate Right Hand
42	7	F01105400	1	Adjustments Handle with Spring
42	7	F82080060	1	Shoulder Bolt for Brush Adjuster
38	7	F01004901	2	Brush Adjusters - Idler Side / <b>Left Hand Side (Includes Parts Below)</b>
		F01106001	1	Brush Adjusting Plate Left Hand
43	7	F01106300	1	Idler Arm Support
43	7	F82080060	1	Shoulder Bolt for Brush Adjuster
		F01000200	8	Rope Sheave Assembly Complete <b>See attached picture</b>
		F09501900	2	Brush Carrier Assembly 25" x 46" <b>See attached picture 10</b>
		F01612102	2	Brush Carrier Shafts 1-3/16" x 64"
		F97700063	40	Wirelon Plastic Coated Steel Cable <b>(In Feet)</b>

## BOTTOM FAN ASSEMBLY

ITEM NO.	PAGE NO.	PART NUMBER	QTY.	DESCRIPTION
		F01615901	1	Fan Shaft 1-1/2" X 79" <b>(Includes Keys)</b> <b>See attached picture 11 &amp; 12</b>
		<b>Not Available</b>	2	6715 Halfmoon Bridgetree Housing with Bearing
		F92400022	2	Bearing <b><u>Insert Only</u></b> for Above
		<b>Note: If housing is bad Items below must be substituted</b>		
		F92401080	2	1-1/2" Pillow Block Bearing
		F02707300	2	Bridgetree Mounting Angle for Bearing
201	25	F06302030	1	Bottom Drum Iron 57-5/8" x 80"
203	25	F06302130	1	Discharge Chute 4"
204	25	F06304304	1	Breast Iron 57-5/8" x 26-1/2"

## ECCENTRIC SHAFT ASSEMBLY

ITEM NO.	PAGE NO.	PART NUMBER	QTY.	DESCRIPTION
		F01611900	1	Eccentric Shaft 1-1/2" X 78-1/2" <b>(Includes Keys)</b> <b>See attached pictures 15 &amp; 16</b>
		<b>Not Available</b>	2	6714 Halfmoon Flange Bearing
		F92400022	1	1-1/2" Bearing <b><u>Insert Only</u></b> for Below
		F92053126	1	6714 Flange Bearing Conversion Kit
		<b>Not Available</b>	1	7475 1-1/2" Halfmoon Bearing Complete w/Bearing
		F92400026	1	1-1/2" Halfmoon Bearing <b><u>Insert Only</u></b> for Above
		F19503600	2	1-1/2" Throw Eccentric Assembly Complete <b>See attached picture 15B</b>

**NOTE: A FEW OF THE NEWER MACHINES HAD COUNTERWEIGHTS ADDED  
TO THE ECCENTRIC SHAFT**

F01104600	4	Counterweight Ends
F01804405	2	Counterweight 16-1/2"

## MAIN SHOE ASSEMBLY

ITEM NO.	PAGE NO.	PART NUMBER	QTY.	DESCRIPTION
		Not Available	1	Shoe Complete with <b>Rockers Right Hand (F03006102)</b> <b>See attached drawing</b>
		F03500400	1	Apron Assembly
		F08-----	1	Sand Spout Left Hand Machines ( <b>Check Measurements</b> )
		F08-----	1	Sand Spout Right Hand Machines ( <b>Check Measurements</b> )
		F08-----	1	Straw Spout Left Hand Machines ( <b>Check Measurements</b> )
		F08-----	1	Straw Spout Right Hand Machines ( <b>Check Measurements</b> )
			2	Rocker adjusting system <b>See attached picture</b>
		F03500210	1	Top Rocker Assembly Complete <b>See attached drawing</b>
		F03500310	1	Bottom Rocker Assembly Complete <b>See attached drawing</b>
		F03016510	2	Front Hanger with Block on Both Sides
		F03102601	2	Shoeside Hanger Support Block
		F03016520	3	Back Shoe Hanger with Block

**Discharge Spouts are Determined by Standing at the Front and Facing the Machine.  
Right Hand Discharge Spouts Would Discharge Towards Your Right Hand.**

F01002803	1	Single Belt Idler Assembly Complete 5-1/2" <b>See attached drawing</b>
-----------	---	---

**The Following Are the Ball Tray Kit Parts That were  
Installed on the Super 498 Cleaners in the Past**

**Old Style Ball Trays with 1" Square Turkey Wire That Came Out  
With the Screens. Ball Trays were not attached to the Screens.**

F90005061	2	Ball Tray Weldment for 1 Piece Screens <b>(NEW PUNCHED STYLE)</b>
F80026102	288	White 1-3/8" Balls
		or
F90005057	2	Ball Tray Weldment for 2 Piece Screens (Bottom 26" Section) <b>(NEW PUNCHED STYLE)</b>
F90005068	2	Ball Tray Weldment for 2 Piece Screens (For Top 34" Section) <b>(NEW PUNCHED STYLE)</b>
F80026102	288	White 1-3/8" Balls ( 54 Per Tray)
F11301707	4	Ball Tray Support Rail 24"
F11301708	4	Ball Tray Support Rail 31"

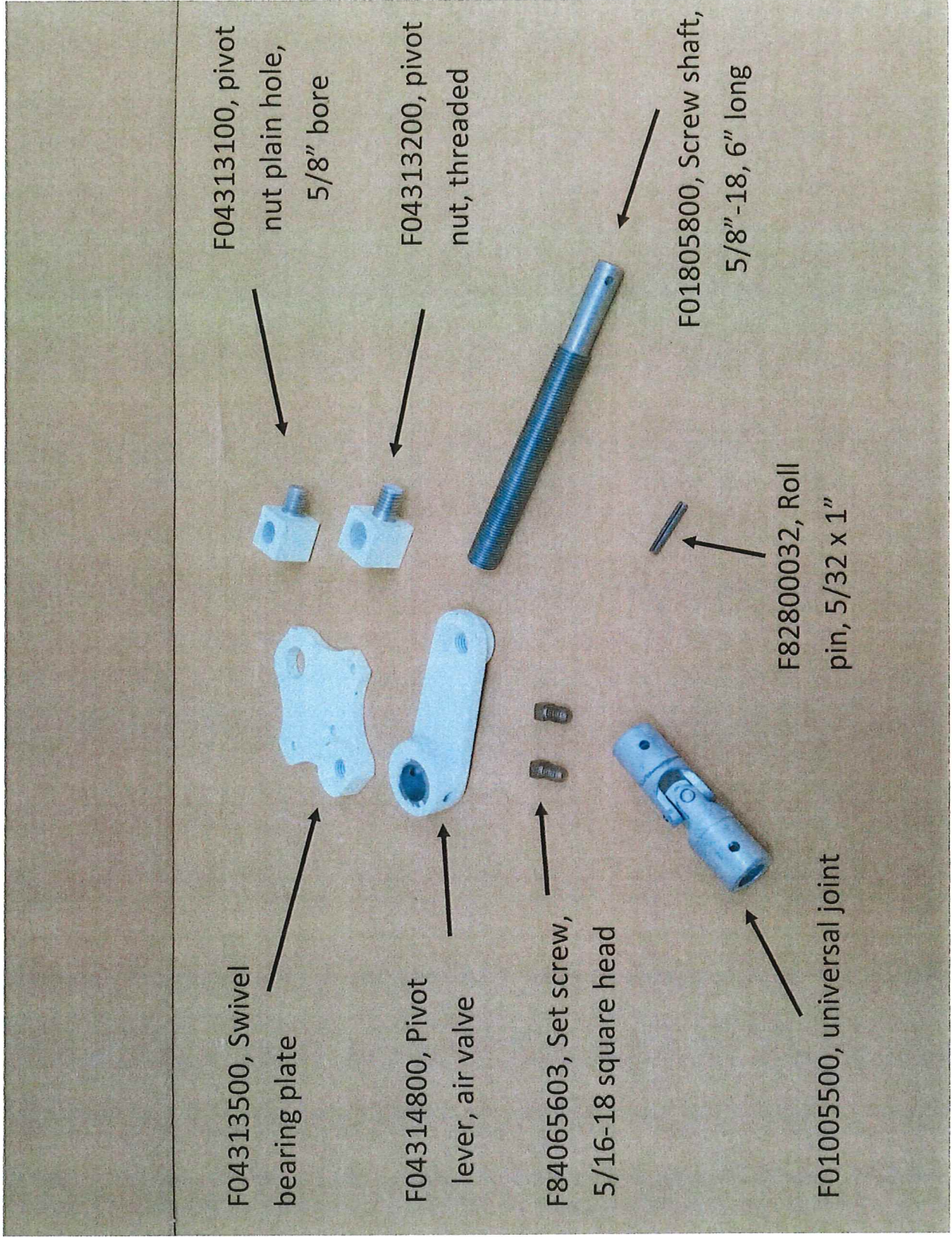












F01013500, Gate valve adjusting assembly, ALL



F01103300, cast pillow  
block mounting block



F01806202, stub  
shaft, 1" x 5-1/2"



F01100100,  
pivot lever



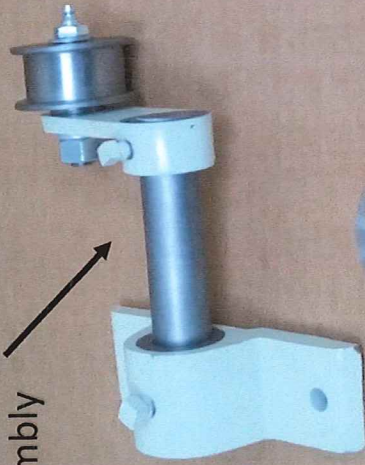
66085200, 1/2-13  
hex nut



66445200, 1/2"  
lock washer



F01002803, complete  
1 belt idler assembly



F01400700, belt tightener  
sheave with bushing

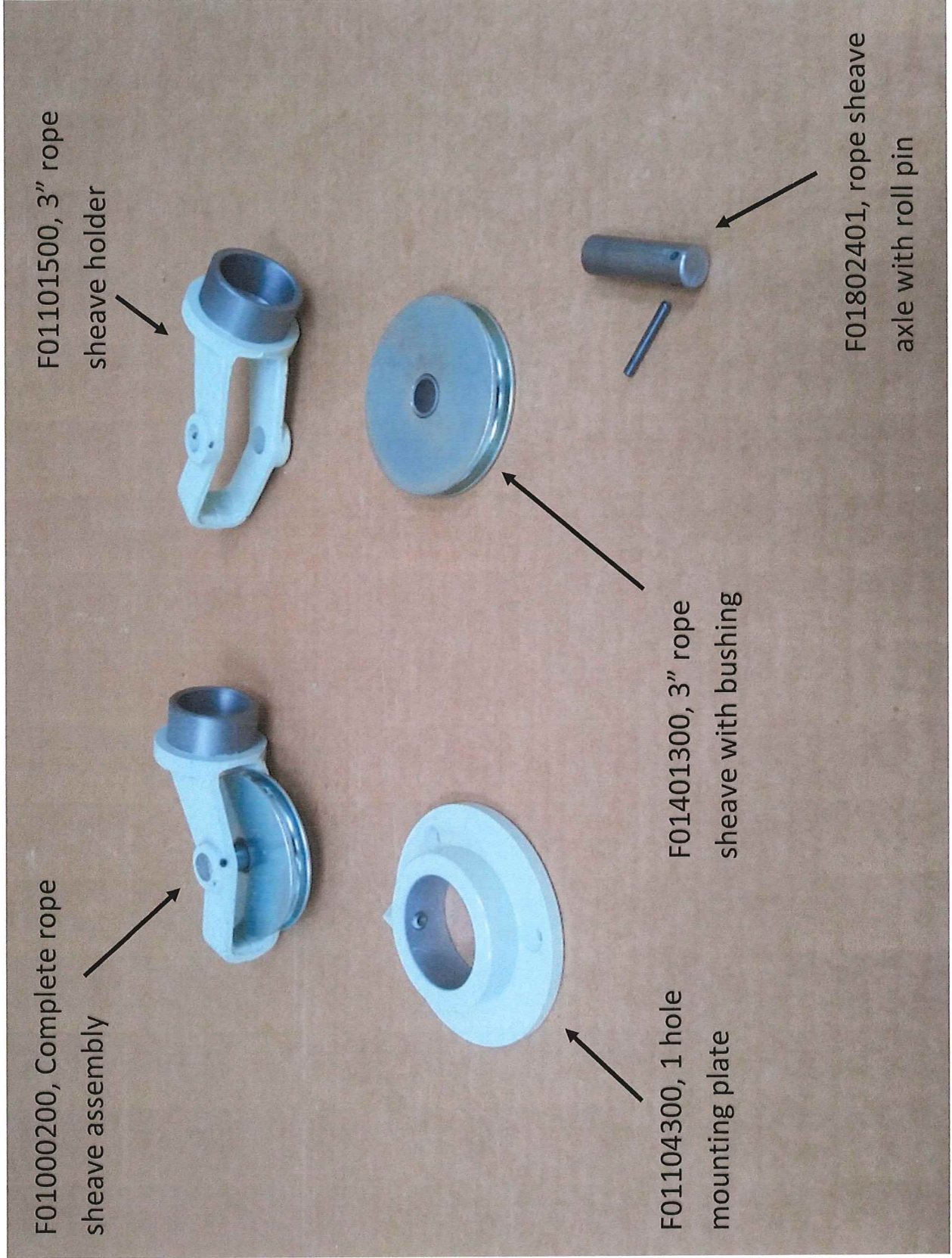


F01805010, belt tightener  
axle with zerck



## Belt tightener assembly





F01000200, Complete rope sheave assembly

F01101500, 3" rope sheave holder

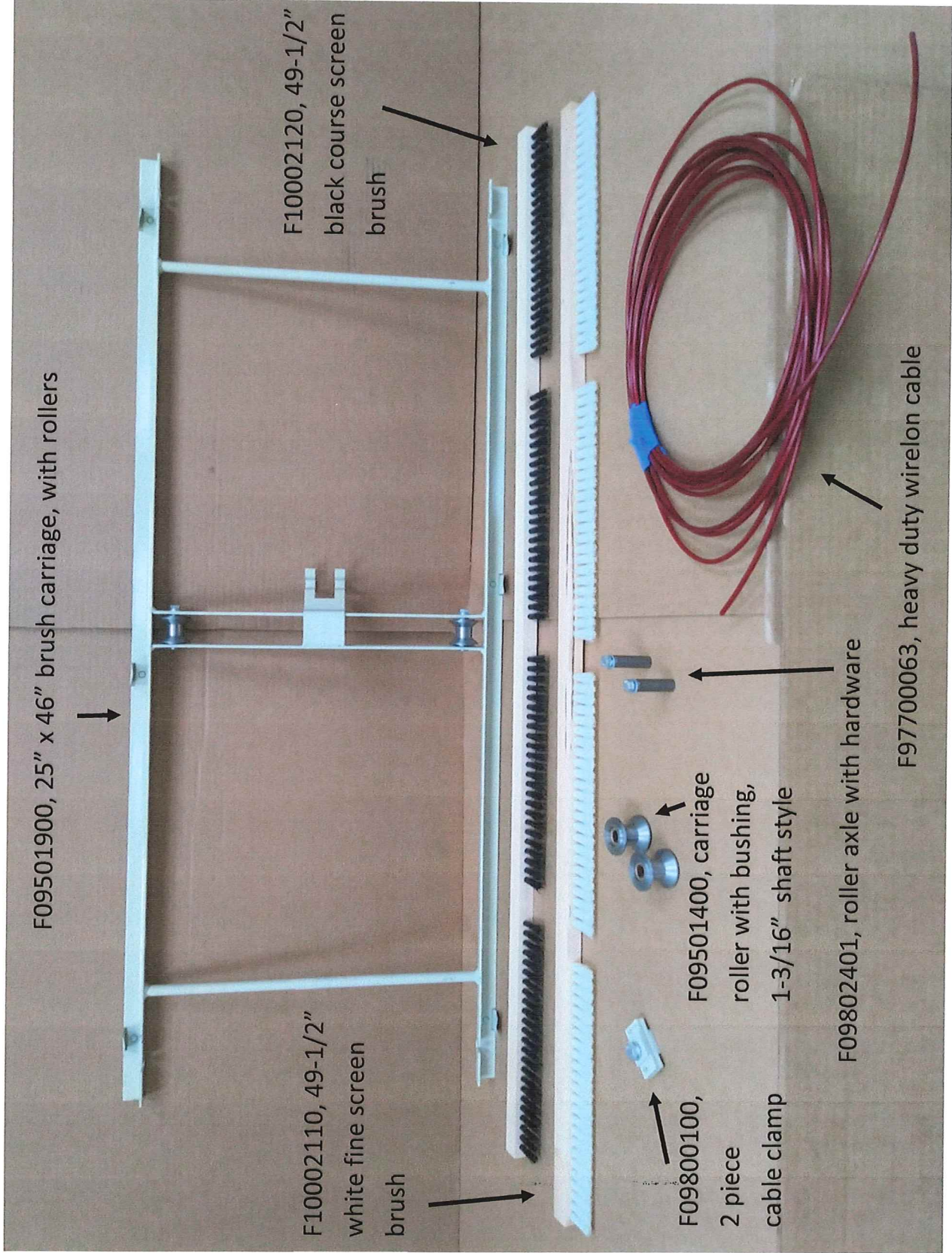
F01104300, 1 hole mounting plate

F01401300, 3" rope sheave with bushing

F01802401, rope sheave axle with roll pin

## 3" Rope sheave assembly





F09501900, 25" x 46" brush carriage, with rollers

F10002120, 49-1/2" black course screen brush

F10002110, 49-1/2" white fine screen brush

F09501400, carriage roller with bushing, 1-3/16" shaft style

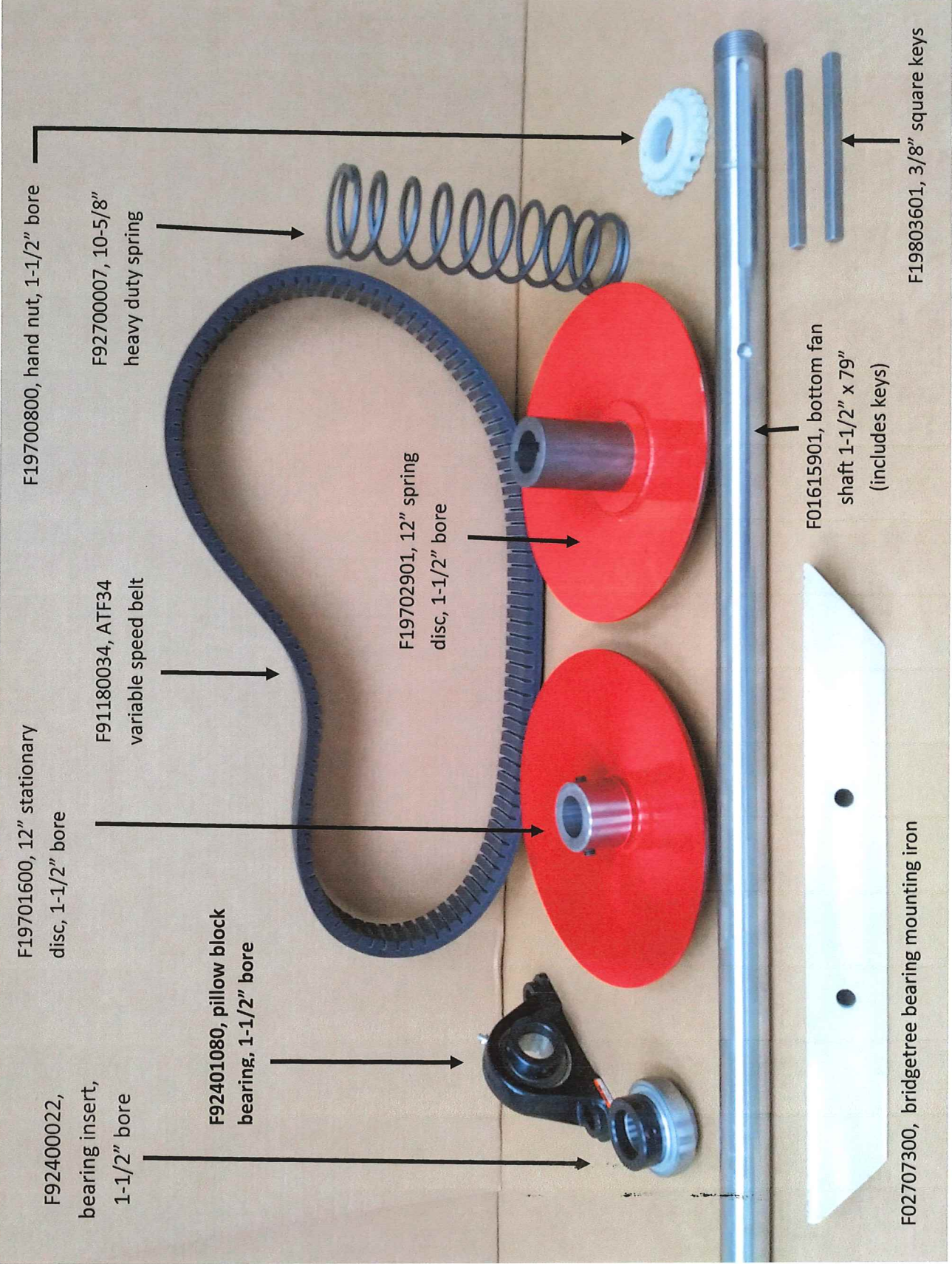
F09800100, 2 piece cable clamp

F09802401, roller axle with hardware

F97700063, heavy duty wirelon cable

# Brush carriage, with accessories, page 10





F19700800, hand nut, 1-1/2" bore

F92700007, 10-5/8" heavy duty spring

F19701600, 12" stationary disc, 1-1/2" bore

F91180034, ATF34 variable speed belt

F19702901, 12" spring disc, 1-1/2" bore

F92400022, bearing insert, 1-1/2" bore

F92401080, pillow block bearing, 1-1/2" bore

F01615901, bottom fan shaft 1-1/2" x 79" (includes keys)

F02707300, bridgetree bearing mounting iron

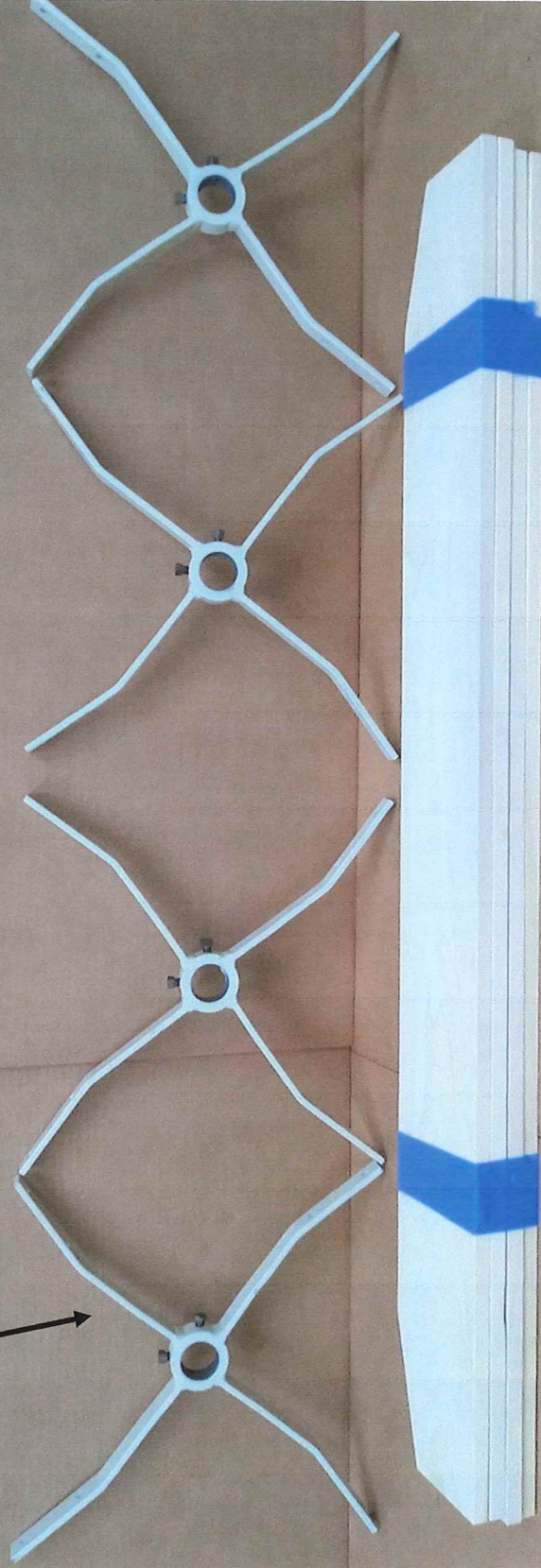
F19803601, 3/8" square keys

# Bottom fan shaft assembly, page 11



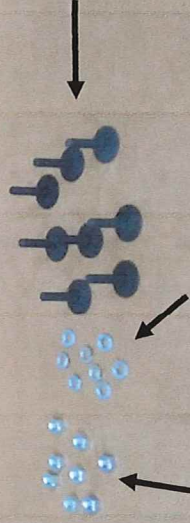
4 pieces, F06001000, bottom fan spider, 1-1/2" bore

F06002778, complete bottom fan assembly



4 pieces, F01701101, bottom fan blade, 55-5/8" long

32 pieces, F82021407, elevator bolt, 1/4-20 x 1-1/4"

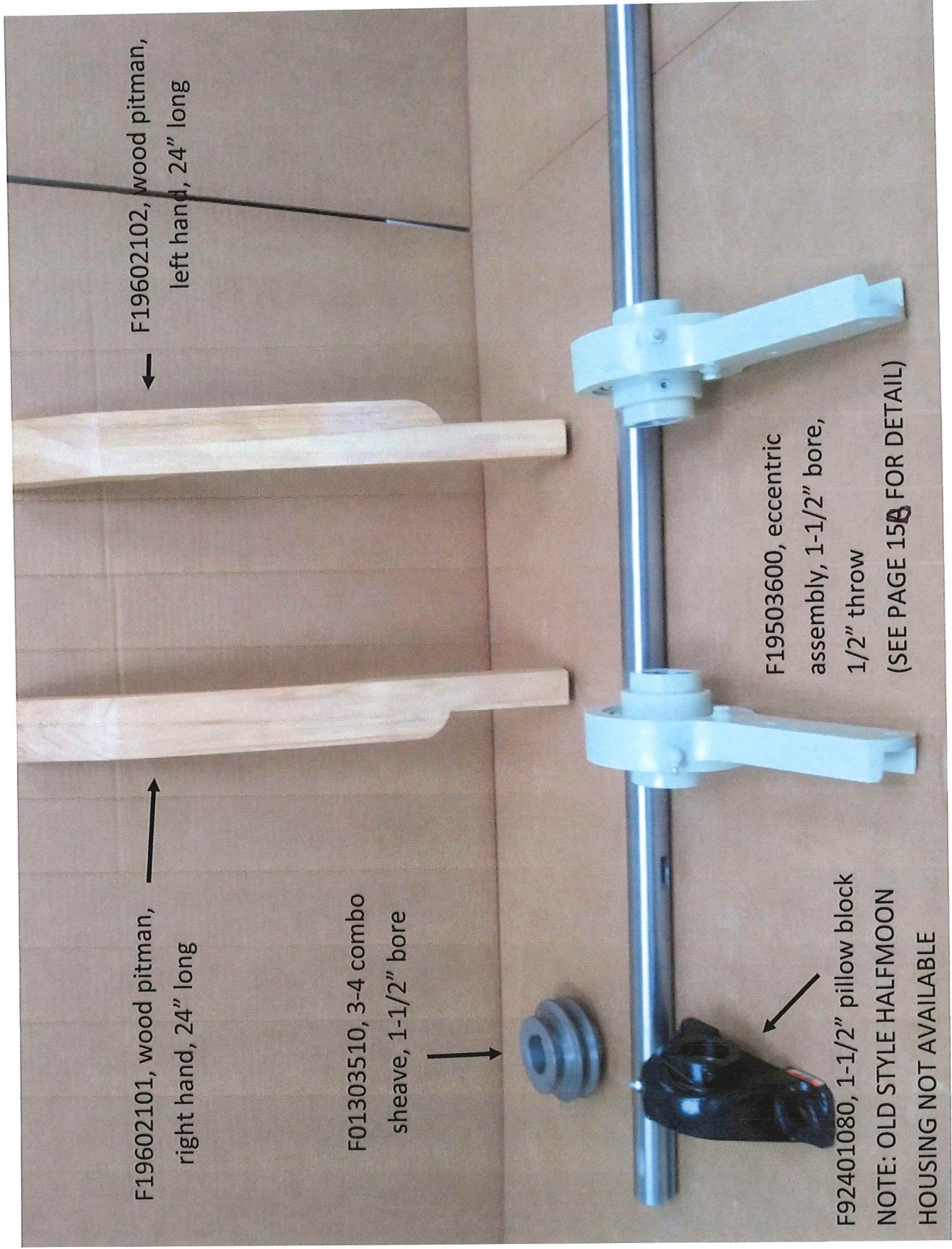


32 pieces, 66083300, 1/4-20 hex nut

32 pieces, 66443300, 1/4" lock washer

Bottom fan assembly, 1-1/2" shaft, page 12





F19602101, wood pitman,  
right hand, 24" long

F19602102, wood pitman,  
left hand, 24" long

F01303510, 3-4 combo  
sheave, 1-1/2" bore

F19503600, eccentric  
assembly, 1-1/2" bore,  
1/2" throw  
(SEE PAGE 15A FOR DETAIL)

F92401080, 1-1/2" pillow block  
NOTE: OLD STYLE HALFMOON  
HOUSING NOT AVAILABLE

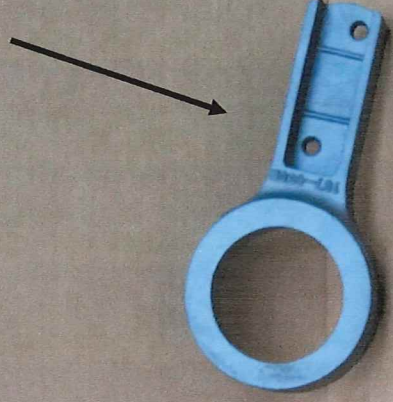
# Eccentric shaft, wood pitmans, 49,498, page 15



F19503600, Complete eccentric assembly, 1-1/2" bore, 1/2" throw



F19703000, Eccentric housing



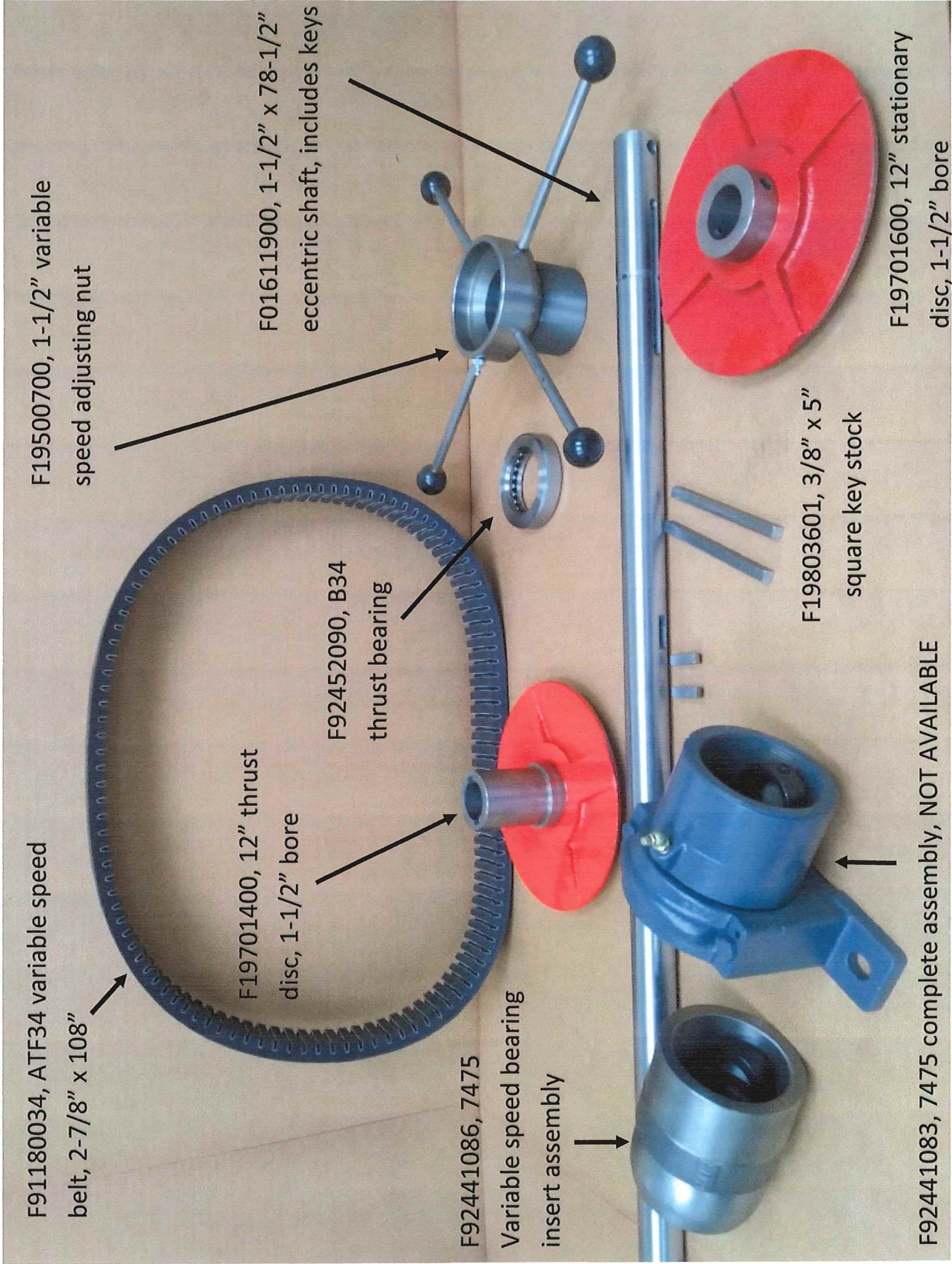
F92400053, Bearing insert



F19804004, Eccentric hub, 1-1/2" bore, 1/2" throw

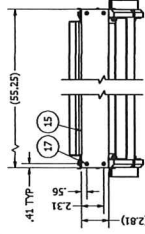
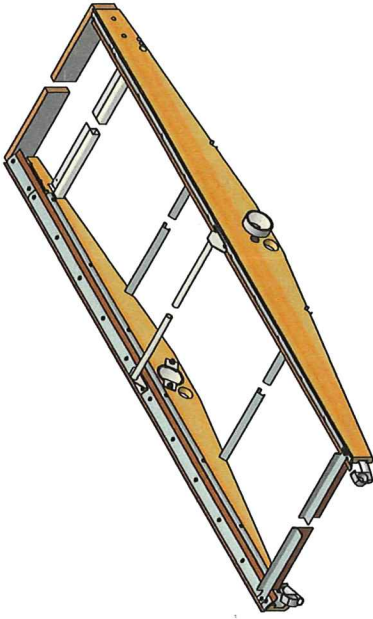
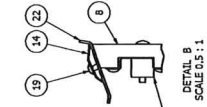
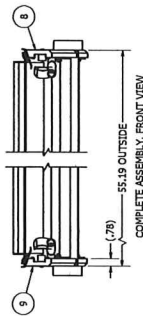
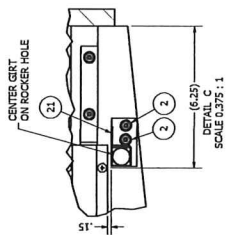
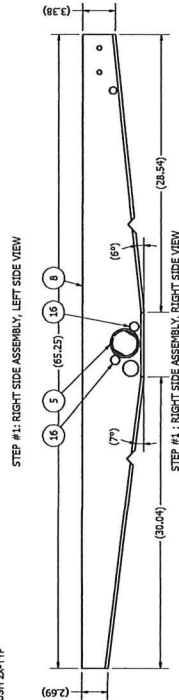
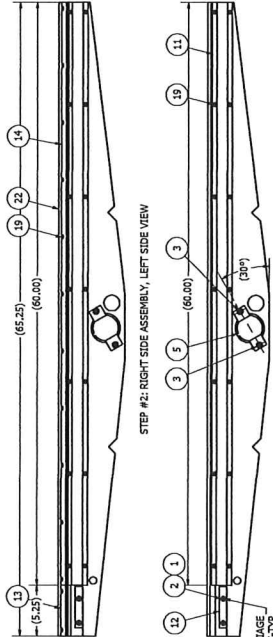
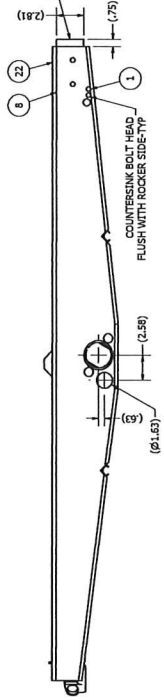
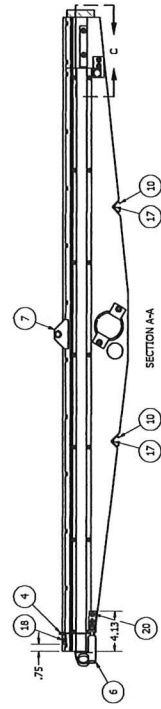
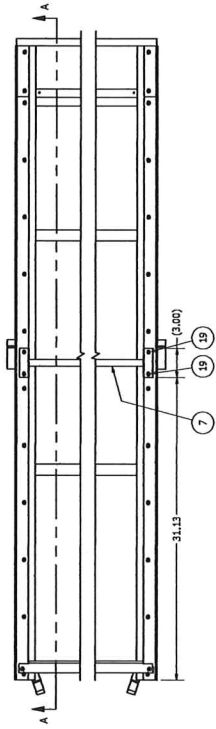






# Eccentric shaft assembly, Super 49,498, page 16

REV	ECN	DESCRIPTION	DATE	APPROVED
A	000000	RELEASE	2/19/1951	RH
B	F130129	REDRAWN CAD, WAS C SIZE	11/79/2012	diminution
C	F130130	REVISED	11/79/2012	diminution
D	F130143	ROTATE ROCKER CUPS 30 DEGR, ADD F03502800, F02826267 & F02826260 WAS F03484021(9)	4/1/2013	change



ITEM	PART NUMBER	QTY	DESCRIPTION
22	F01152006	2	BELTING, 3 PLY ROYAL 2.50 X 65.25"
21	F0005303	1	GRT W/DMT, ROCKER ADJ, TELESCOPING #8
20	F0495403	4	SNG PAN X HD, #10 X 3/4"
19	F0495402	8	SNG PAN X HD, #8 X 3/4"
18	F0495401	8	SNG PAN X HD, #6 X 3/4"
17	F0444011	8	SNG RAY CROSS HEAD #10 X 1.50"
16	F02021407	4	BOLT, ELEV 1/4-20 X 1.25"
15	F11307305	1	BOARD, REAR, SPOUT GRT 2.81", 5/8RD
14	F0301100	2	CAP, RUBBER HOLDING, ROCKER, 60.00"
13	F0301100	2	CAP, RUBBER HOLDING, ROCKER, 5.25"
12	F0301100	2	STOP, SCREEN .75 X 4.38"
11	F0301100	2	BRACE, BOTTOM, ROCKER #8
10	F0301100	2	BRACE, BOTTOM, ROCKER #4
9	F03600300	1	SIDE, ROCKER, LH TOP, BOTTOM SHOE, 298D
8	F03600300	1	SIDE, ROCKER, RH TOP, BOTTOM SHOE, 298D
7	F0350900	1	GRT W/DMT, PIPE, ROCKER #8
6	F0350900	2	SCREEN HOOK ASSY, STANDARD
5	F0350900	2	CUP W/DMT, ROCKER, HEAVY DUTY BRUSH
4	F02826260	4	NUT, HEX SERL LOCK 1/4-20
3	F02826260	4	NUT, HEX SERL LOCK 1/4-20
2	F02826260	8	BOLT, CARB 10-24 X 1.25"

**CAD**  
NO MANUAL  
FARREL COMPANY, INC.  
TOLERANCES  
DIMENSIONS  
UNLESS OTHERWISE SPECIFIED  
REQUEST. NO PART OF THIS  
DRAWING IS TO BE REPRODUCED  
OR TRANSMITTED IN ANY FORM  
OR BY ANY MEANS, WITHOUT THE  
WRITTEN PERMISSION OF THE  
FARREL COMPANY, INC.

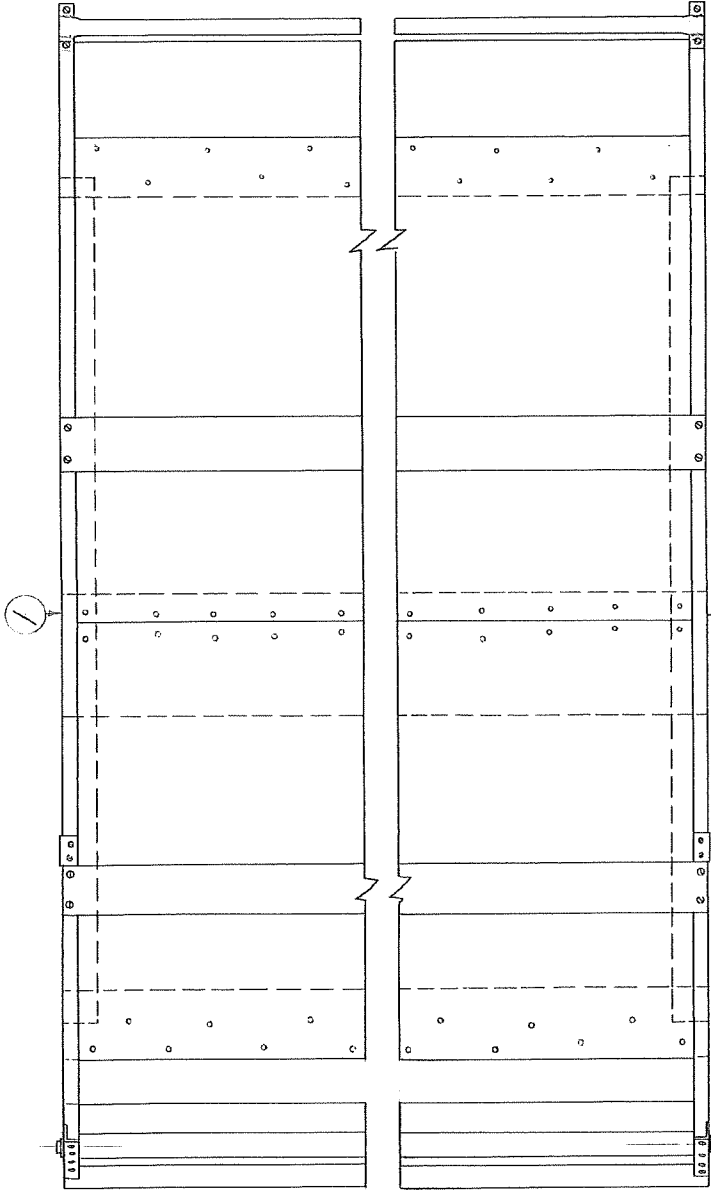
DESIGNED BY: J. J. FARRELL  
CHECKED BY: J. J. FARRELL  
DATE: 10/28/2004  
SCALE: 1:1  
PROJECT: F03500310

PROPERTY: FARREL COMPANY, INC.  
DRAWN BY: J. J. FARRELL  
DATE: 10/28/2004  
SCALE: 1:1  
PROJECT: F03500310

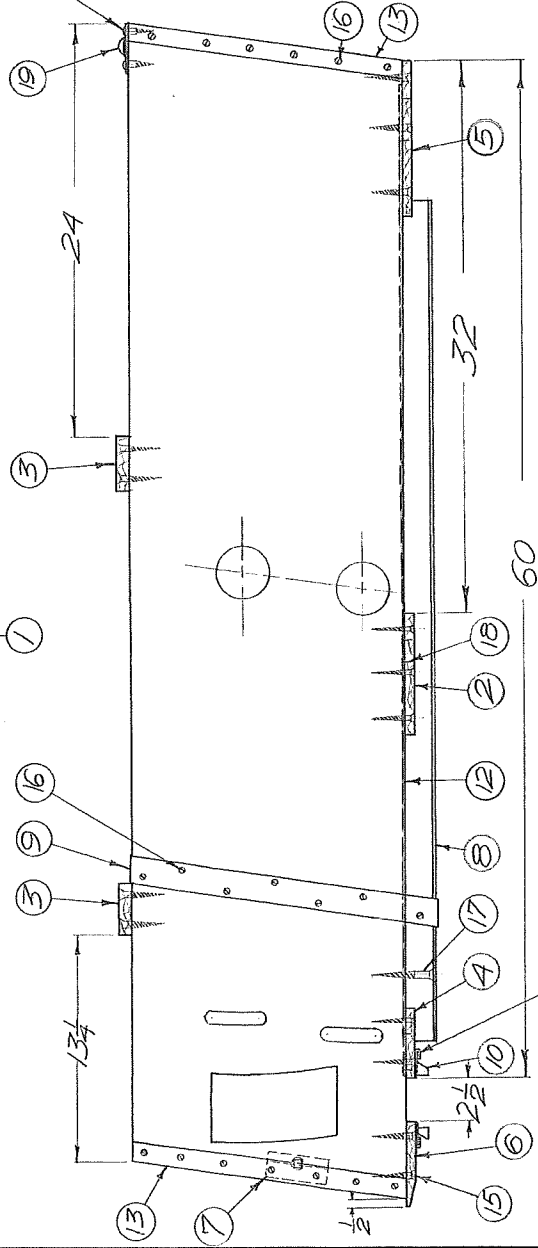
NOTES:  
1. DO NOT SCALE FROM DRAWING.  
2. ONE PIECE REQUIRED PER F0300108: SHOE ASSY, BOTTOM RH W/ROCKERS, 298D.  
3. ONE PIECE REQUIRED PER F0300109: SHOE ASSY, BOTTOM LH/RH W/ROCKERS, 69A & D.







MACH. NO.	QTY	PART NAME	MAT'L	REMARKS
19	1	PIPE GIRT ASSY.		
18	70	1/4" 14 NAILS		
17	12	2" 10 WOODSCREW	FLAT HD.	
16	36	5/8" 8 WOODSCREW	FLAT HD.	
15	30	1 1/2" 10 WOODSCREW	FLAT HD.	
14	4	3/4" 8 WOODSCREW	RD. HD.	
13	4	END IRON	STL.	
12	2	SHOE BOTTOM METAL SH. ST.		
11	2	SPROUT GUIDE SH. ST.		
10	2	SPROUT TRACK	PINE	
9	2	SIDE BRACE	STL.	
8	2	SHOE RUNNER	OAK	
7	1	CROSS GIRT	PINE	
6	1	SHOE MENDING	PINE	
5	1	FRONT BOARD	PINE	
4	1	SPROUT BOARD	PINE	
3	1	TOP BOARD	PINE	
2	1	PITMAN	PINE	
1	2	SHOE SIDE	OAK L.H. & R.H.	



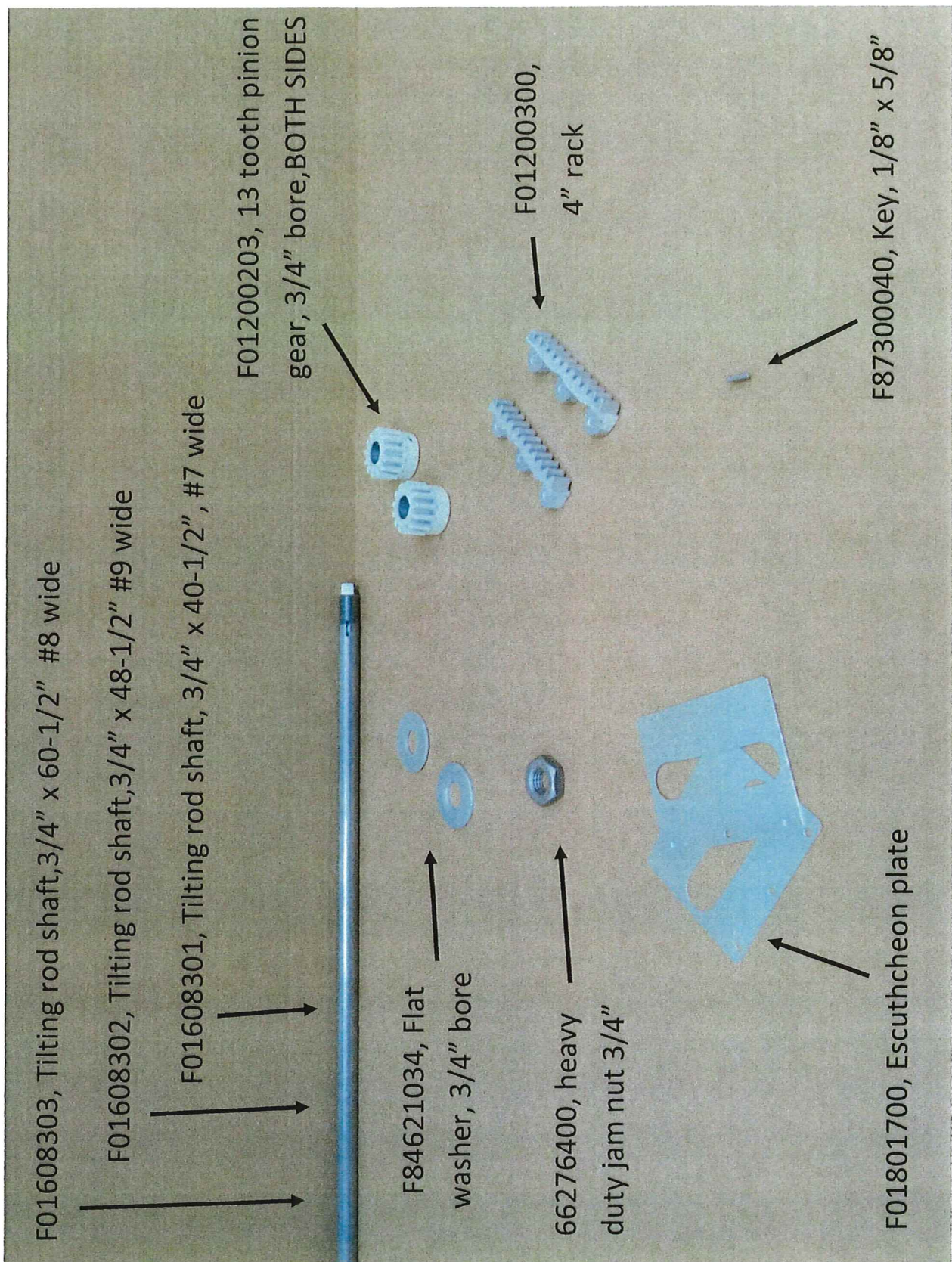
MACH. NO.	QTY	PART NAME	MAT'L	REMARKS
19	1	PIPE GIRT ASSY.		
18	60	1/4" 14 NAILS		
17	12	2" 10 WOODSCREW	FLAT HD.	
16	36	5/8" 8 WOODSCREW	FLAT HD.	
15	30	1 1/2" 10 WOODSCREW	FLAT HD.	
14	4	3/4" 8 WOODSCREW	RD. HD.	
13	4	END IRON	STL.	
12	2	SHOE BOTTOM METAL SH. ST.		
11	2	SPROUT GUIDE SH. ST.		
10	2	SPROUT TRACK	PINE	
9	2	SIDE BRACE	STL.	
8	2	SHOE RUNNER	OAK	
7	1	CROSS GIRT	PINE	
6	1	SHOE MENDING	PINE	
5	1	FRONT BOARD	PINE	
4	1	SPROUT BOARD	PINE	
3	1	TOP BOARD	PINE	
2	1	PITMAN BOARD	PINE	
1	2	SHOE SIDE	OAK L.H. & R.H.	

NOTE FOR SHOES WITH ROCKERS INCLUDED USE:  
 #9 WIDE  
 L.H. - #30-061-4B  
 R.H. - #30-061-5B  
 #8 WIDE  
 L.H. - #30-061-6B  
 R.H. - #30-061-7B

#9 WIDE  
 L.H. AS SHOWN - #30-061-B  
 R.H. OPPOSITE - #30-061-1B  
 #8 WIDE  
 L.H. AS SHOWN - #30-061-2B  
 R.H. OPPOSITE - #30-061-3B

DATE: \_\_\_\_\_  
 MICROFILMED  
 DATE 9-23-57 SCALE 1/2"=1"  
 A. T. FERRILL & CO. 490 W. WABASH, MICH. 49010  
 SHEET NO. 30-061





F01608303, Tilting rod shaft, 3/4" x 60-1/2" #8 wide

F01608302, Tilting rod shaft, 3/4" x 48-1/2" #9 wide

F01608301, Tilting rod shaft, 3/4" x 40-1/2", #7 wide

F84621034, Flat washer, 3/4" bore

66276400, heavy duty jam nut 3/4"

F01801700, Escutcheon plate

F01200203, 13 tooth pinion gear, 3/4" bore, BOTH SIDES

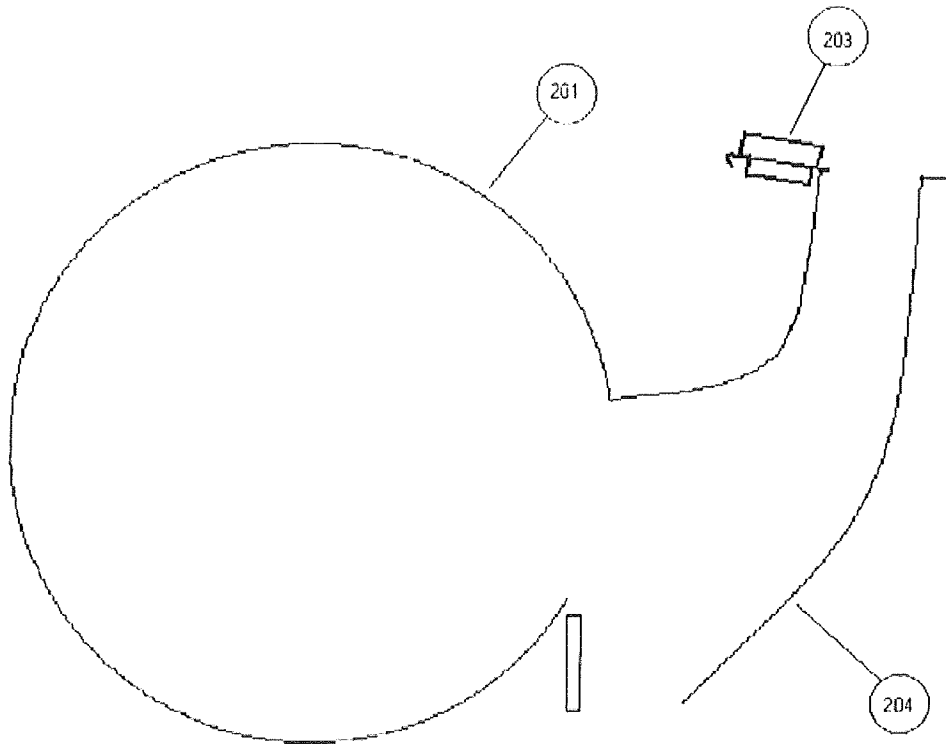
F01200300, 4" rack

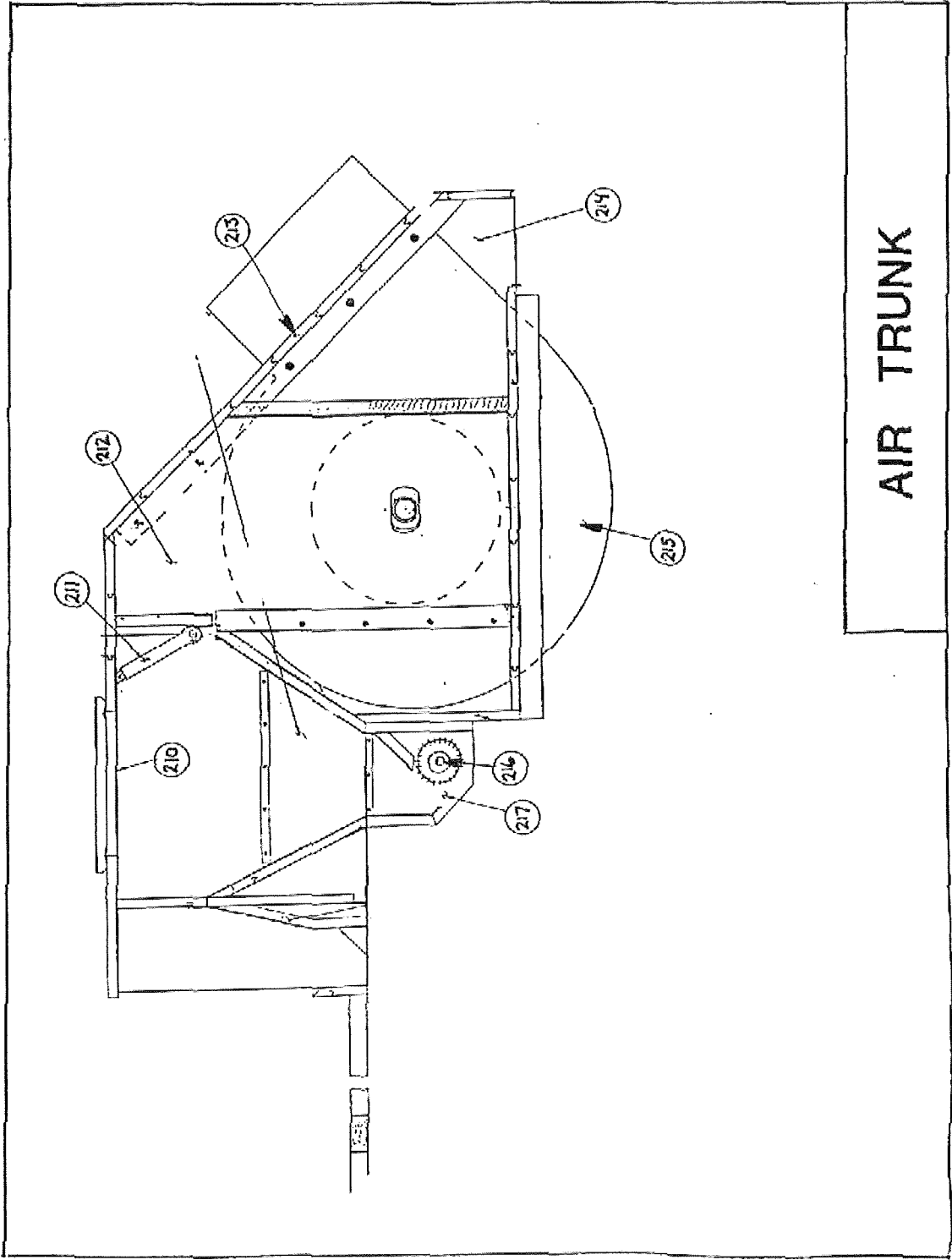
F87300040, Key, 1/8" x 5/8"

## Screen rocker adjusting assembly



# Bottom Fan Metal





AIR TRUNK